

Plans and drawings relevant to reports submitted to District Planning Committee

Wednesday 13 November 2024 at 6pm

**At Council Chamber, Council Offices, Market Street,
Newbury, RG14 5LD**

&

And via Zoom

[to be read in conjunction with the main agenda]

Please note:

- *All drawings are copied at A4 and consequently are not scalable*
- *Most relevant plans have been included – however, in some cases, it may be necessary for the case officer to make a selection*
- *All drawings are available to view at www.westberks.gov.uk*



West Berkshire
C O U N C I L

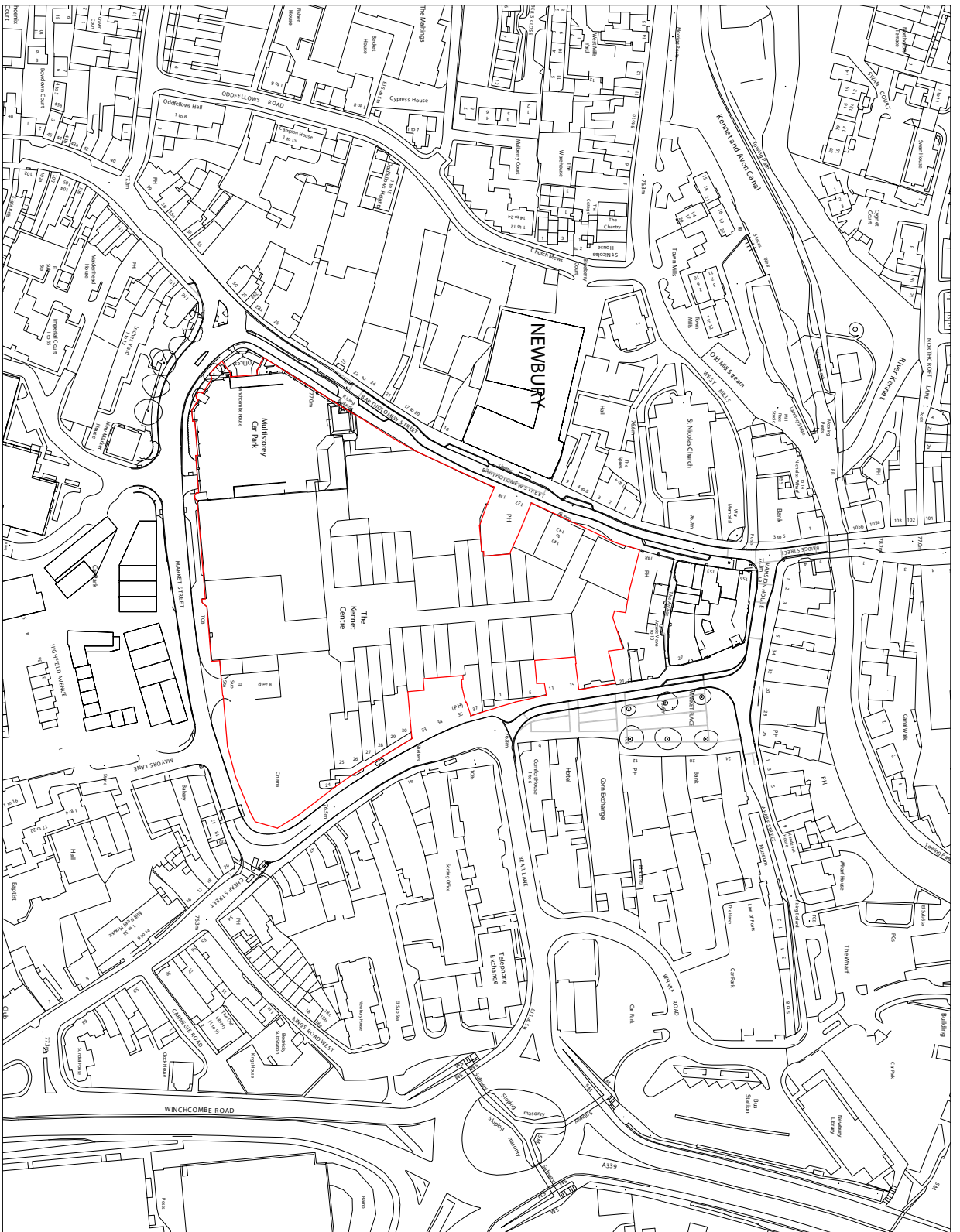
23/02094/FULMAJ

The Mall

The Kennet Centre

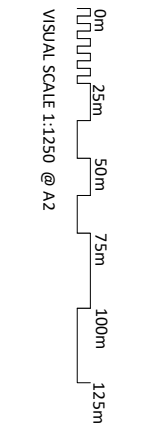
Newbury

RG14 5EN



NOTES
CONSULTANTS
 - Refer to highway consultants drawing for details to roadwork consultants drawing for details
AREA
 - Refer to area schedule

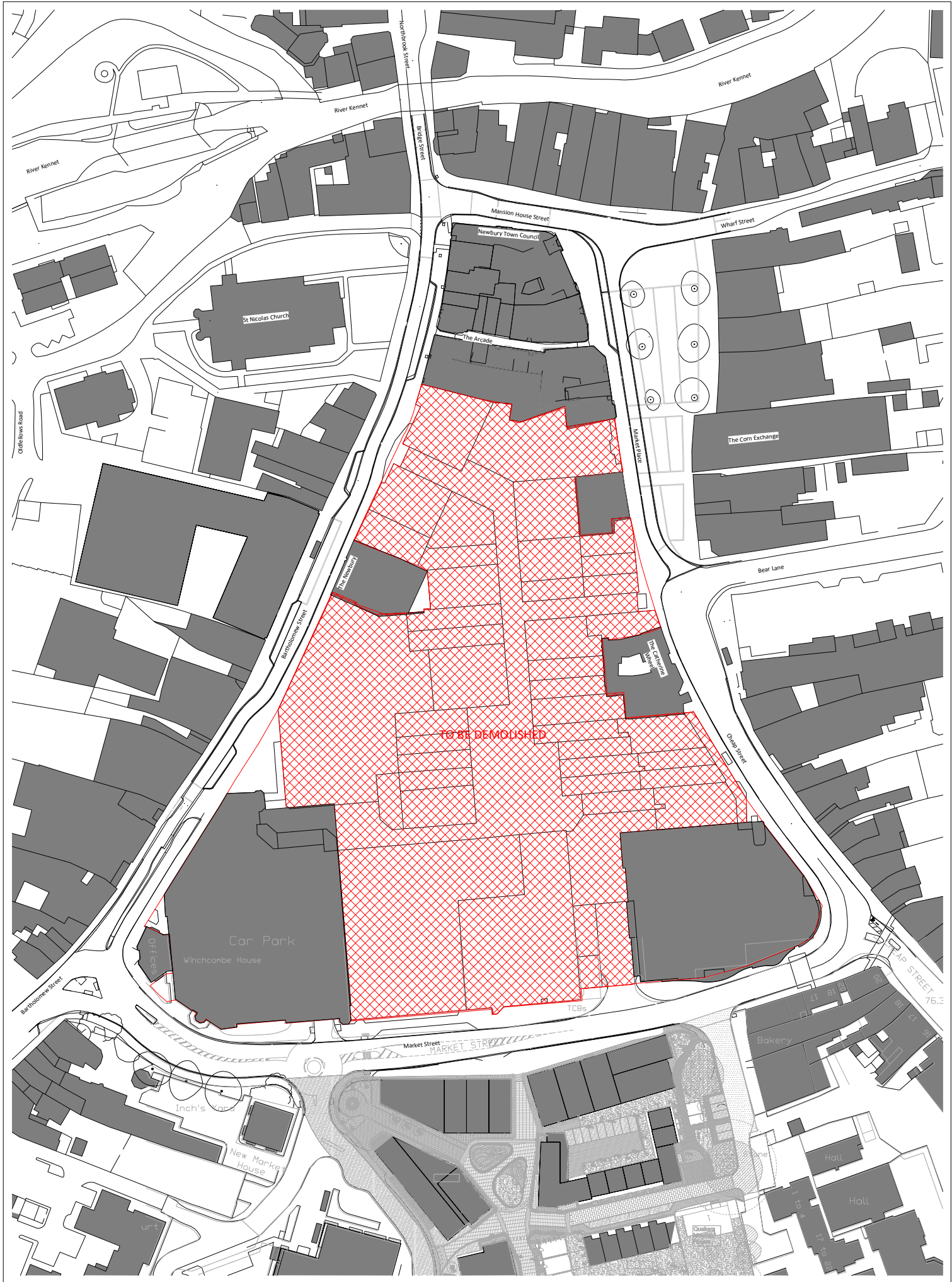
Rev	Notes	Date	By
PA	Issued for Planning Submission	06/09/2023	



KEY
 APPLICATION BOUNDARY

ColladoCollins Architects
 17, 18 Poling Street
 London W1W 6DU
 T 020 7580 3490
 F 020 7580 2917
 info@colladocollins.com
 www.colladocollins.com
 Date: 06/09/2023
 Drawn by: K
 Checked by: RC
 Scale @ A2: 1:1250
 Scale @ A1: 1:2500
 CAD File No:

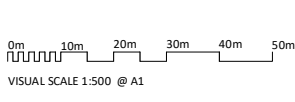
LOCHAILORT
 Eagle Quarter, Newbury
 Site Location Plan
 PLANNING
 20011 P0-001



NOTES
 CONSULTANTS
 - Refer to highways consultant's drawings for details
 - Refer to landscape consultant's drawings for details
 - Refer to site schedule

© Copyright Reserved, ColladoCollins Architects Ltd

Rev.	Notes	Date	By	Auth.
PA	Issued for Planning Submission	06/09/2023		



KEY
 ——— APPLICATION BOUNDARY

ColladoCollinsArchitects

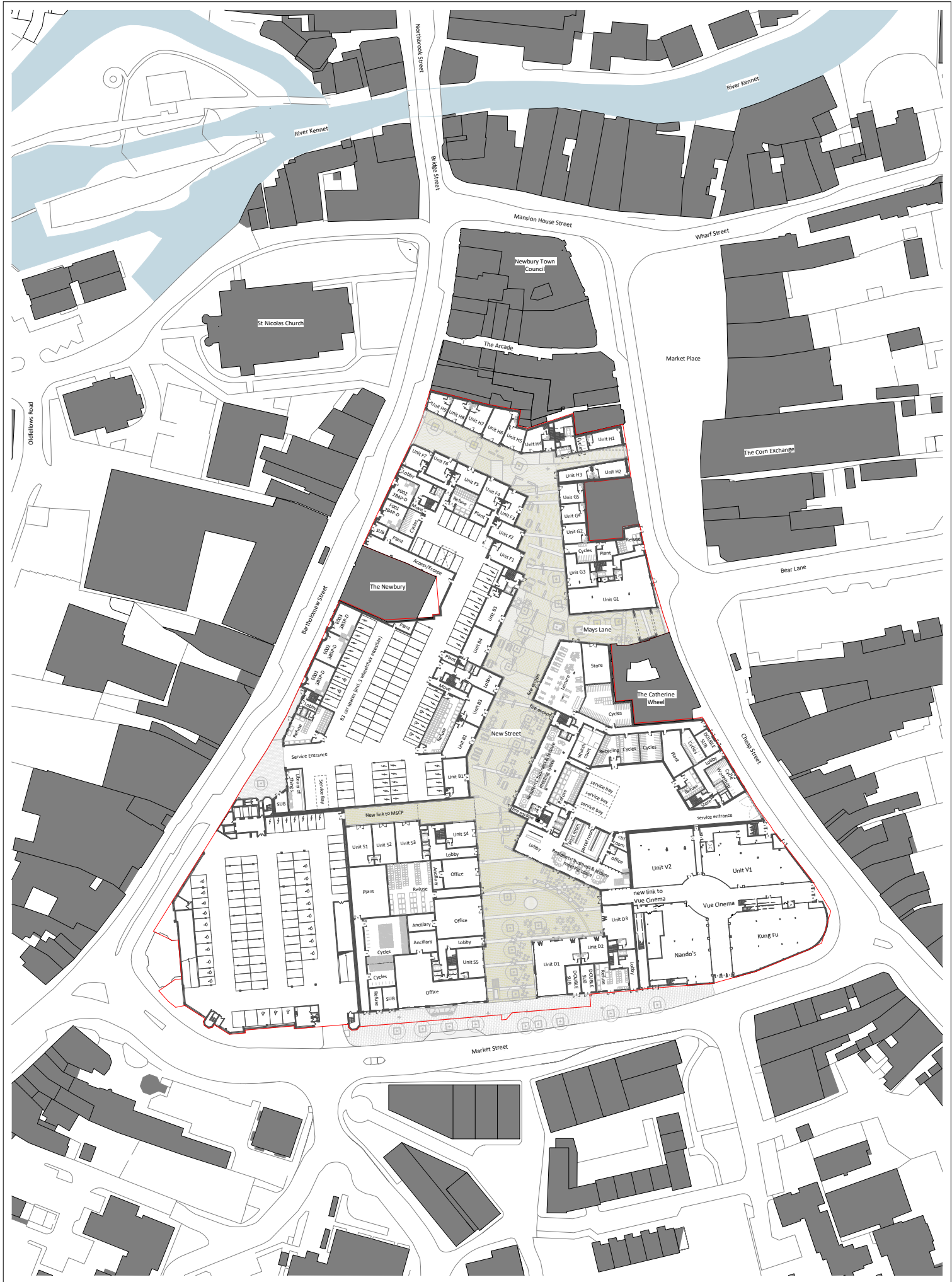
17-19 Foley Street
 London W5V 6SW
 T 020 7580 5490
 F 020 7580 2912
 info@colladocollins.com
 www.colladocollins.com

LOCHAILORT
 Eagle Quarter, Newbury
 Demolition Site Plan

PLANNING
 20011 P0-030

PA

Date: 06/09/2023
 Drawn By: LK
 Checked by: RC
 Scale @ A1: 1:200
 Scale @ A3: 1:300
 CAD File No:

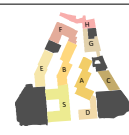
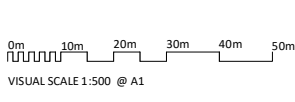


NOTES
 CONSULTANTS
 - Refer to highways consultant's drawings for details
 - Refer to landscape consultant's drawings for details
 - Refer to area schedule

ASBIS
 - Refer to area schedule

© Copyright Reserved, ColladoCollins Architects Ltd

Rev.	Notes	Date	By	Auth.
PA	PLANNING SUBMISSION	06/09/2013	MM	RC
FB	POST planning amendments	12/09/2013	MM	RC
P23	Revised to File Engineers comments	02/12/2013	MM	RC



ColladoCollins Architects

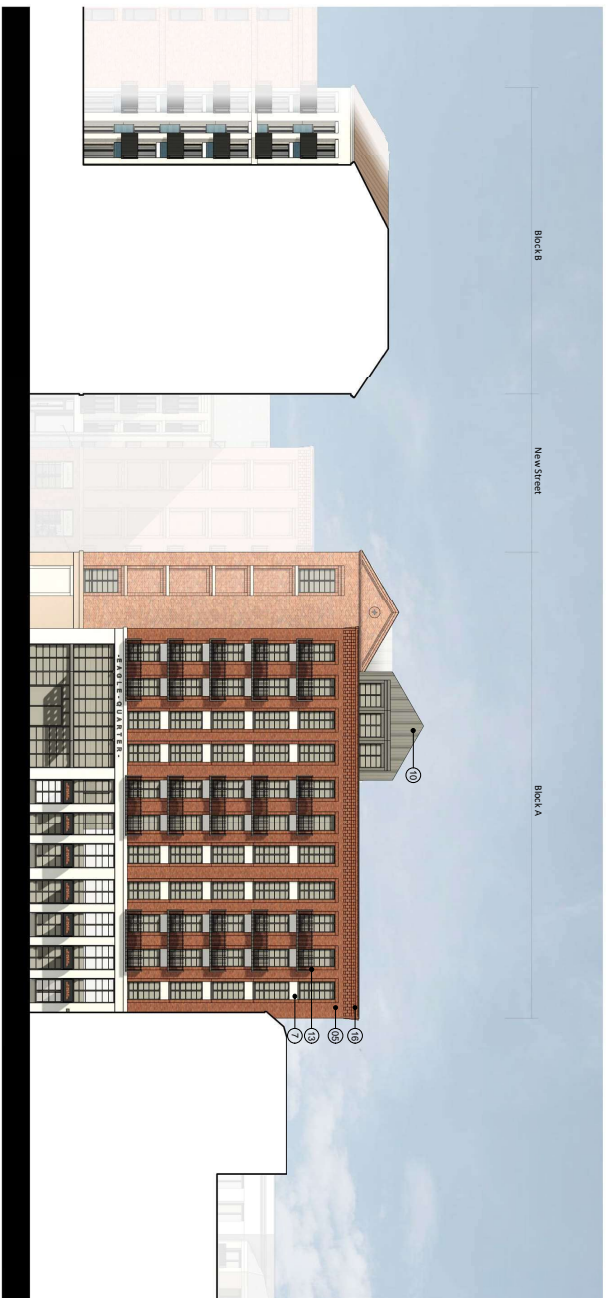
17-19 Foley Street
 London W1W 6DW
 T 020 7580 3480
 F 020 7580 2912
 info@colladocollins.com
 www.colladocollins.com

Date: 29/01/2012
 Drawn by: LK
 Checked by: RC
 Scale @ A1: As indicated
 Scale @ A3: 1:1000
 CAD File No:

LOCHAILORT
 Eagle Quarter, Newbury
 Proposed Site Plan - Ground Floor

PROPOSED
 20011
 P0-100





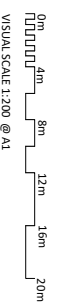
1 Block A - South Elevation
1 : 200



2 Block A - West (New Street) Elevation
1 : 200

NOTES
1. All elevations are based on the current design.
2. All elevations are based on the current design.
3. All elevations are based on the current design.
4. All elevations are based on the current design.
5. All elevations are based on the current design.

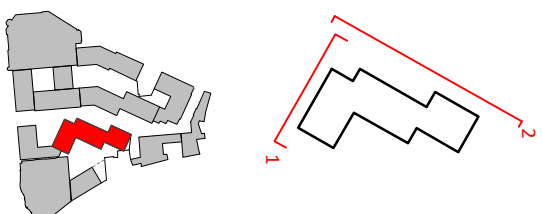
Item	Notes	DATE	BY
1	Initial Design	07/20/2021	AK
2	Revised Design	07/20/2021	AK
3	Final Design	07/20/2021	AK
4	Final Design	07/20/2021	AK
5	Final Design	07/20/2021	AK



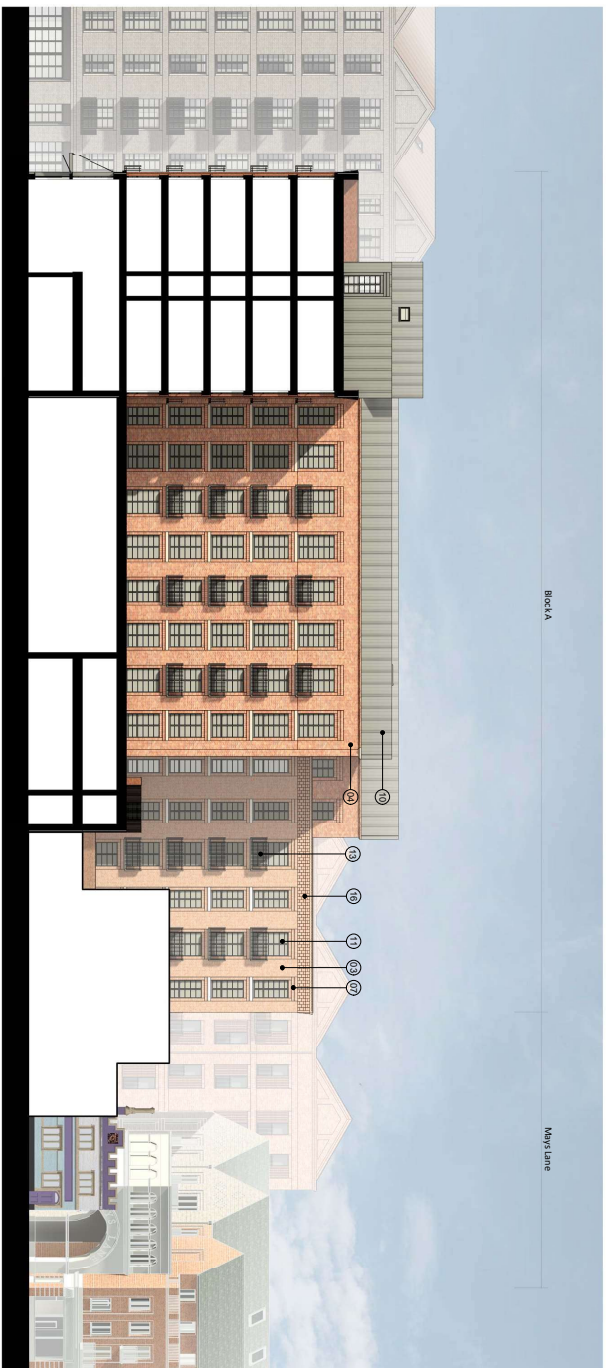
ColladoCollins Architects
1724 Park Road
Colorado Springs, CO 80904
Tel: 719.575.1100
Fax: 719.575.1101
www.colladocollins.com

MATERIAL NOTES

- 01 Brick - Beige
- 02 Brick - Light Grey
- 03 Brick - Light Red
- 04 Brick - Red
- 05 Brick - Dark Red
- 06 Brick - Blue
- 07 GRC or Similar - Light Grey
- 08 GRC or Similar - Dusy Pink
- 09 Roof Tiles
- 10 Standing Seam Metal Roof - Dark Grey
- 11 Window / Door Frame - Dark Grey
- 12 Window / Door Frame - Bronze Effect
- 13 Metal Railing / Details - Dark Grey
- 14 Metal Railing / Details - Bronze Effect
- 15 Expanded Mesh
- 16 Brick Detail to Parapet
- 17 White Render
- 18 Window / Door Frame - White
- 19 White GRC Detailing
- 20 Brick - Diamond Pattern
- 21 Clay Hanging Wall Tiles
- 22 Window / Door Frame - Dark Green
- 23 Standing Seam Metal Roof - Dark Brown
- 24 Solid Panels to Sky Bridge
- 25 Light Grey Render
- 26 Opaque Glass Windows



LOCHALLOST
Eagle Quarter, Newbury
Proposed Elevations - Block A
South and West
PLANNING P3-101



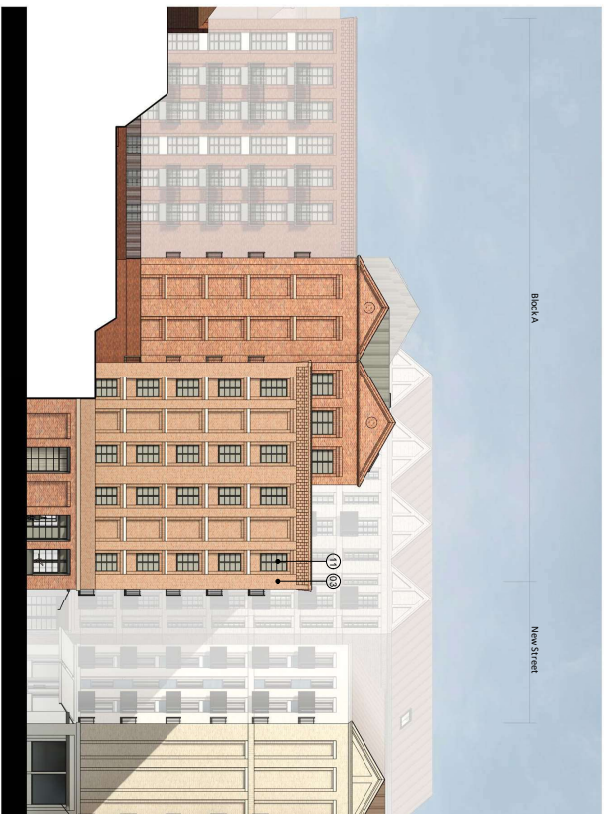
1 Block A - East Elevation / Section

1 : 200



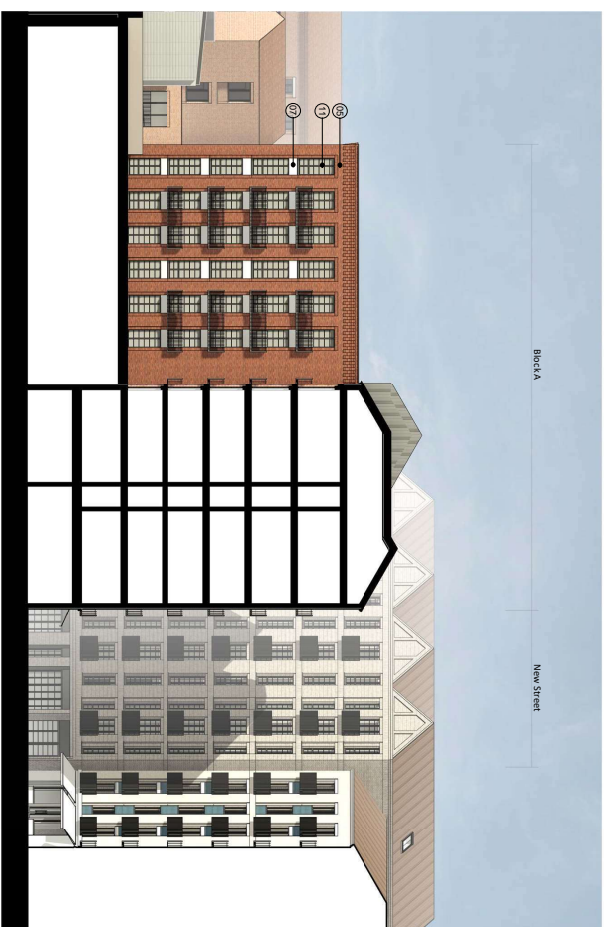
2 Block A - East Elevation 2

1 : 200



3 Block A - North (Mays Lane) Elevation

1 : 200

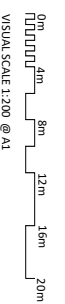


4 Block A - North Elevation / Podium Section

1 : 200

NOTES
 1. All work to be completed in accordance with the approved plans and specifications.
 2. All work to be completed in accordance with the approved plans and specifications.
 3. All work to be completed in accordance with the approved plans and specifications.
 4. All work to be completed in accordance with the approved plans and specifications.
 5. All work to be completed in accordance with the approved plans and specifications.
 6. All work to be completed in accordance with the approved plans and specifications.
 7. All work to be completed in accordance with the approved plans and specifications.
 8. All work to be completed in accordance with the approved plans and specifications.
 9. All work to be completed in accordance with the approved plans and specifications.
 10. All work to be completed in accordance with the approved plans and specifications.
 11. All work to be completed in accordance with the approved plans and specifications.
 12. All work to be completed in accordance with the approved plans and specifications.
 13. All work to be completed in accordance with the approved plans and specifications.
 14. All work to be completed in accordance with the approved plans and specifications.
 15. All work to be completed in accordance with the approved plans and specifications.
 16. All work to be completed in accordance with the approved plans and specifications.
 17. All work to be completed in accordance with the approved plans and specifications.
 18. All work to be completed in accordance with the approved plans and specifications.
 19. All work to be completed in accordance with the approved plans and specifications.
 20. All work to be completed in accordance with the approved plans and specifications.

Item	Quantity	Unit	Material
1	1	Sq. Ft.	Brick - Beige
2	1	Sq. Ft.	Brick - Light Grey
3	1	Sq. Ft.	Brick - Light Red
4	1	Sq. Ft.	Brick - Red
5	1	Sq. Ft.	Brick - Dark Red
6	1	Sq. Ft.	Brick - Blue
7	1	Sq. Ft.	GRC or Similar - Light Grey
8	1	Sq. Ft.	GRC or Similar - Dark Grey
9	1	Sq. Ft.	Roof Tiles
10	1	Sq. Ft.	Standing Seam Metal Roof - Dark Grey
11	1	Sq. Ft.	Window / Door Frame - Dark Grey
12	1	Sq. Ft.	Window / Door Frame - Bronze Effect
13	1	Sq. Ft.	Metal Railing / Details - Dark Grey
14	1	Sq. Ft.	Metal Railing / Details - Bronze Effect
15	1	Sq. Ft.	Expanded Mesh
16	1	Sq. Ft.	Brick Detail to Parapet
17	1	Sq. Ft.	White Render
18	1	Sq. Ft.	Window / Door Frame - White
19	1	Sq. Ft.	White GRC Detailing
20	1	Sq. Ft.	Brick - Diamond Pattern
21	1	Sq. Ft.	Clay Hanging Wall Tiles
22	1	Sq. Ft.	Window / Door Frame - Dark Green
23	1	Sq. Ft.	Standing Seam Metal Roof - Dark Brown
24	1	Sq. Ft.	Solid Panels to Sky Bridge
25	1	Sq. Ft.	Light Grey Render
26	1	Sq. Ft.	Oxstone Glass Windows

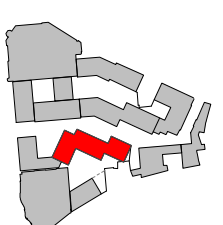
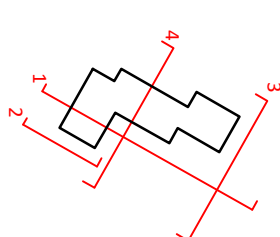


VISUAL SCALE 1:200 @ A1

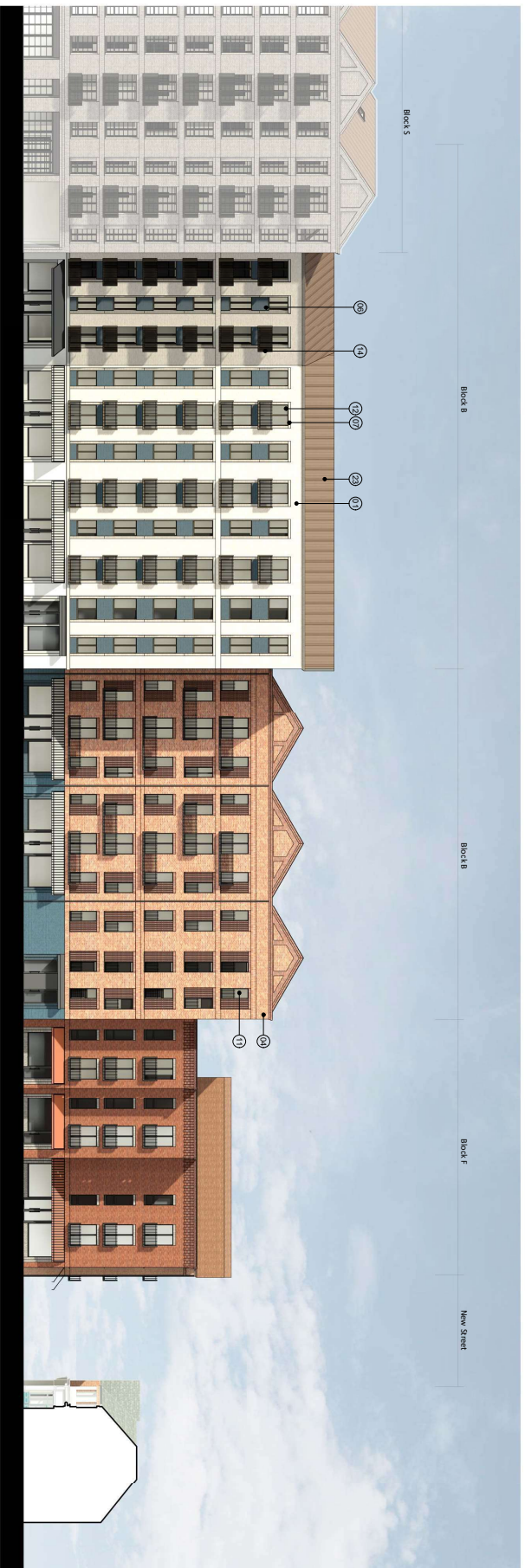
ColladoCollins Architects
 17124 Park Road
 10000 Woodway
 Dallas, TX 75244
 Phone: 214.412.0200
 Fax: 214.412.0201
 www.colladocollins.com

MATERIAL NOTES

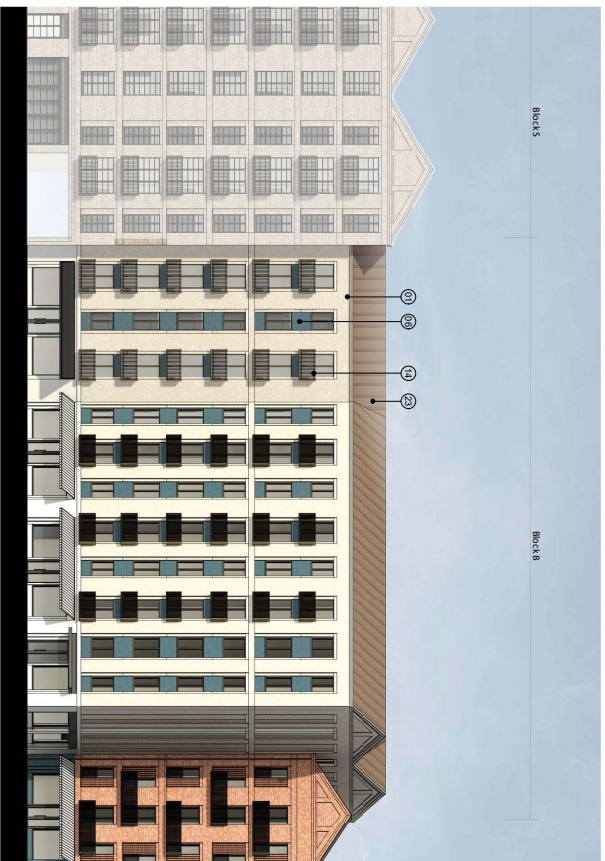
- 01 Brick - Beige
- 02 Brick - Light Grey
- 03 Brick - Light Red
- 04 Brick - Red
- 05 Brick - Dark Red
- 06 Brick - Blue
- 07 GRC or Similar - Light Grey
- 08 GRC or Similar - Dark Grey
- 09 Roof Tiles
- 10 Standing Seam Metal Roof - Dark Grey
- 11 Window / Door Frame - Dark Grey
- 12 Window / Door Frame - Bronze Effect
- 13 Metal Railing / Details - Dark Grey
- 14 Metal Railing / Details - Bronze Effect
- 15 Expanded Mesh
- 16 Brick Detail to Parapet
- 17 White Render
- 18 Window / Door Frame - White
- 19 White GRC Detailing
- 20 Brick - Diamond Pattern
- 21 Clay Hanging Wall Tiles
- 22 Window / Door Frame - Dark Green
- 23 Standing Seam Metal Roof - Dark Brown
- 24 Solid Panels to Sky Bridge
- 25 Light Grey Render
- 26 Oxstone Glass Windows



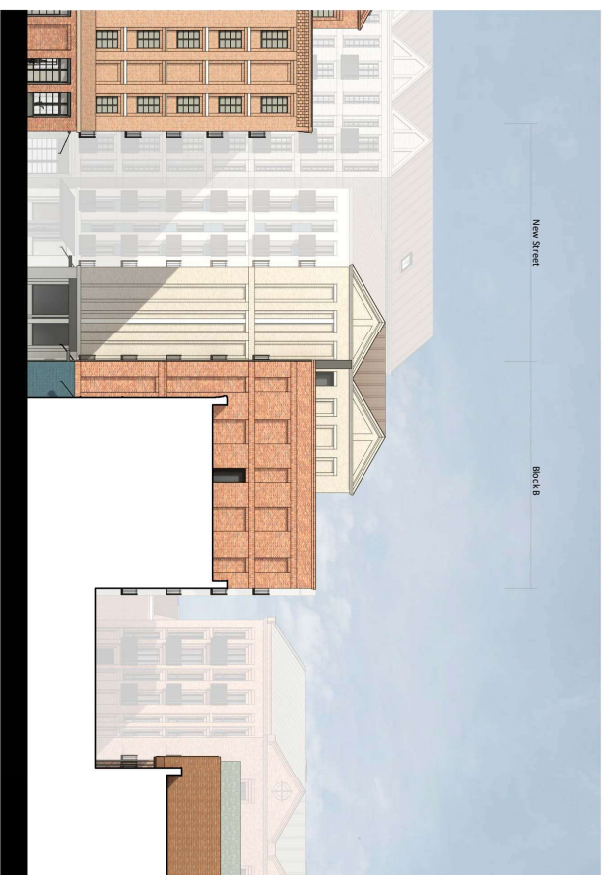
LOCHALLOST
 Eagle Quarter, Newbury
 Proposed Elevations - Block A
 East and North
 PLANNING P3-102
 20011



1 Block B - East (New Street) Elevation
1 : 200



2 Block B - East Elevation 2
1 : 200



3 Block B - North Elevation
1 : 200

NOTES
1. All elevations are based on the approved site plan.
2. All elevations are based on the approved site plan.
3. All elevations are based on the approved site plan.
4. All elevations are based on the approved site plan.
5. All elevations are based on the approved site plan.

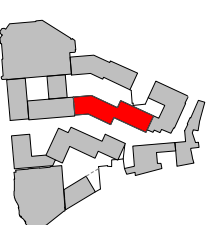
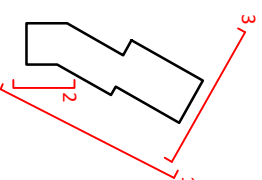
Item	Notes	Issue	By	Date
1	Issue for Public Submission	2/20/2021		
2	Issue for Public Submission	2/20/2021		
3	Issue for Public Submission	2/20/2021		
4	Issue for Public Submission	2/20/2021		
5	Issue for Public Submission	2/20/2021		
6	Issue for Public Submission	2/20/2021		
7	Issue for Public Submission	2/20/2021		
8	Issue for Public Submission	2/20/2021		
9	Issue for Public Submission	2/20/2021		
10	Issue for Public Submission	2/20/2021		
11	Issue for Public Submission	2/20/2021		
12	Issue for Public Submission	2/20/2021		
13	Issue for Public Submission	2/20/2021		
14	Issue for Public Submission	2/20/2021		
15	Issue for Public Submission	2/20/2021		
16	Issue for Public Submission	2/20/2021		
17	Issue for Public Submission	2/20/2021		
18	Issue for Public Submission	2/20/2021		
19	Issue for Public Submission	2/20/2021		
20	Issue for Public Submission	2/20/2021		
21	Issue for Public Submission	2/20/2021		
22	Issue for Public Submission	2/20/2021		

0m 4m 8m 12m 15m 20m
VISUAL SCALE 1:200 @ A1

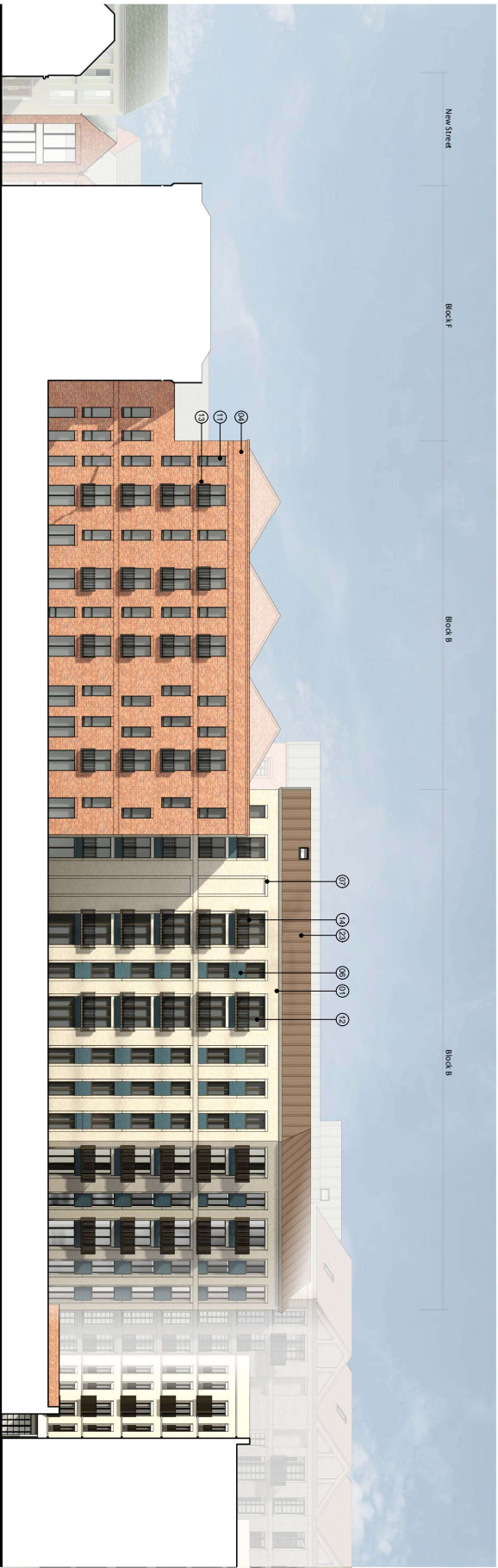
ColladoCollins Architects
17124 Park Road
10000 Woodway
F 00375-0100
H 00375-0100
www.colladocollins.com 504.914.1100

MATERIAL NOTES

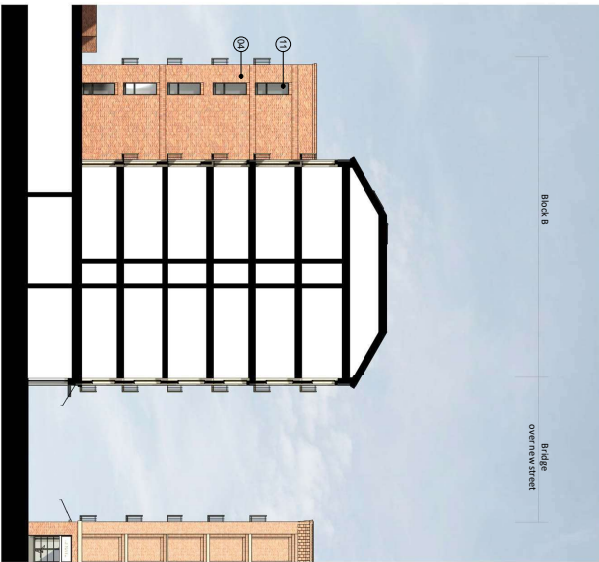
- 11 Brick - Beige
- 12 Brick - Light Grey
- 13 Brick - Light Red
- 14 Brick - Red
- 15 Brick - Dark Red
- 16 Brick - Blue
- 17 GRC or Similar - Light Grey
- 18 GRC or Similar - Dark Grey
- 19 Roof Tiles
- 20 Standing Seam Metal Roof - Dark Grey
- 21 Window / Door Frame - Dark Grey
- 22 Window / Door Frame - Bronze Effect
- 23 Metal Railing / Details - Dark Grey
- 24 Metal Railing / Details - Bronze Effect
- 25 Expanded Mesh
- 26 Brick Detail to Parapet
- 27 White Render
- 28 Window / Door Frame - White
- 29 White GRC Detailing
- 30 Brick - Diamond Pattern
- 31 Clay Hanging Wall Tiles
- 32 Window / Door Frame - Dark Green
- 33 Standing Seam Metal Roof - Dark Brown
- 34 Solid Panels to Sky Bridge
- 35 Light Grey Render
- 36 Opaque Glass Windows



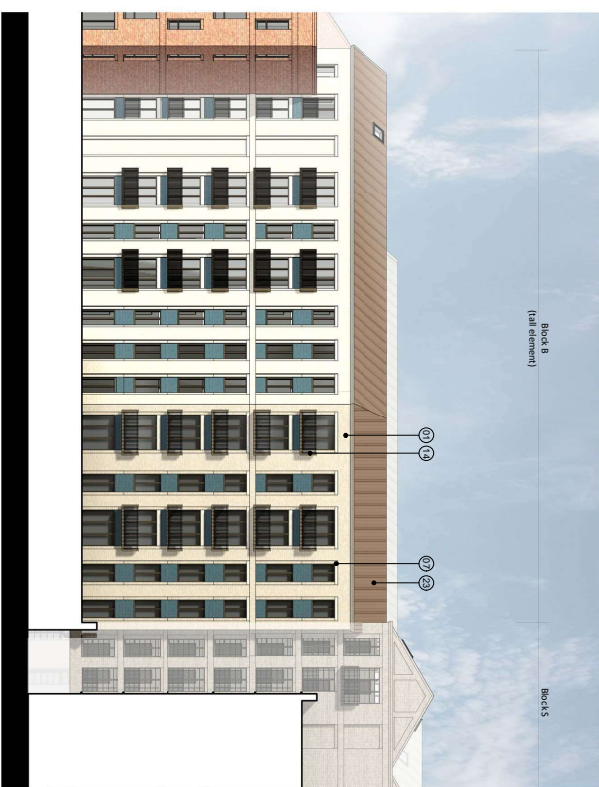
LOCHALLOST
Eagle Quarter, Newbury
Proposed Elevations - Block B
East and North
PLANNING P3-103
20011



1 Block B - Northwest Elevation
1 : 200



2 Block B - Southwest Elevation/Section
1 : 200



3 Block B - West Elevation
1 : 200

NOTES

1. All work to be completed in accordance with the approved plans and specifications.

2. All work to be completed in accordance with the approved plans and specifications.

3. All work to be completed in accordance with the approved plans and specifications.

4. All work to be completed in accordance with the approved plans and specifications.

5. All work to be completed in accordance with the approved plans and specifications.

6. All work to be completed in accordance with the approved plans and specifications.

7. All work to be completed in accordance with the approved plans and specifications.

8. All work to be completed in accordance with the approved plans and specifications.

9. All work to be completed in accordance with the approved plans and specifications.

10. All work to be completed in accordance with the approved plans and specifications.

11. All work to be completed in accordance with the approved plans and specifications.

12. All work to be completed in accordance with the approved plans and specifications.

13. All work to be completed in accordance with the approved plans and specifications.

14. All work to be completed in accordance with the approved plans and specifications.

15. All work to be completed in accordance with the approved plans and specifications.

16. All work to be completed in accordance with the approved plans and specifications.

17. All work to be completed in accordance with the approved plans and specifications.

18. All work to be completed in accordance with the approved plans and specifications.

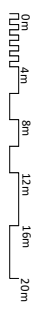
19. All work to be completed in accordance with the approved plans and specifications.

20. All work to be completed in accordance with the approved plans and specifications.

21. All work to be completed in accordance with the approved plans and specifications.

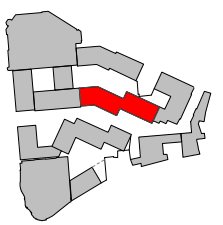
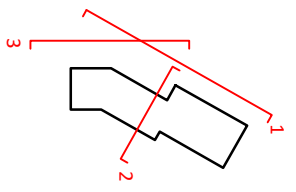
22. All work to be completed in accordance with the approved plans and specifications.

Rev.	Number	Description	Date	By	Check
1	1	Issue for Permit Submission	07/22/2023	AK	AK
2	2	Issue for Construction	07/22/2023	AK	AK
3	3	Issue for Construction	07/22/2023	AK	AK
4	4	Issue for Construction	07/22/2023	AK	AK
5	5	Issue for Construction	07/22/2023	AK	AK
6	6	Issue for Construction	07/22/2023	AK	AK
7	7	Issue for Construction	07/22/2023	AK	AK
8	8	Issue for Construction	07/22/2023	AK	AK
9	9	Issue for Construction	07/22/2023	AK	AK
10	10	Issue for Construction	07/22/2023	AK	AK
11	11	Issue for Construction	07/22/2023	AK	AK
12	12	Issue for Construction	07/22/2023	AK	AK
13	13	Issue for Construction	07/22/2023	AK	AK
14	14	Issue for Construction	07/22/2023	AK	AK
15	15	Issue for Construction	07/22/2023	AK	AK
16	16	Issue for Construction	07/22/2023	AK	AK
17	17	Issue for Construction	07/22/2023	AK	AK
18	18	Issue for Construction	07/22/2023	AK	AK
19	19	Issue for Construction	07/22/2023	AK	AK
20	20	Issue for Construction	07/22/2023	AK	AK
21	21	Issue for Construction	07/22/2023	AK	AK
22	22	Issue for Construction	07/22/2023	AK	AK



MATERIAL NOTES

- 11 Brick - Beige
- 12 Brick - Light Grey
- 13 Brick - Light Red
- 14 Brick - Red
- 15 Brick - Dark Red
- 16 Brick - Blue
- 17 GRC or Similar - Light Grey
- 18 GRC or Similar - Dunny Pink
- 19 Roof Tiles
- 20 Standing Seam Metal Roof - Dark Grey
- 21 Window / Door Frame - Dark Grey
- 22 Window / Door Frame - Bronze Effect
- 23 Metal Railing / Details - Dark Grey
- 24 Metal Railing / Details - Bronze Effect
- 25 Expanded Mesh
- 26 Brick Detail to Parapet
- 27 White Render
- 28 Window / Door Frame - White
- 29 Brick - Diamond Pattern
- 30 White GRC Detailing
- 31 Brick - Diamond Pattern
- 32 Clay Hanging Wall Tiles
- 33 Window / Door Frame - Dark Green
- 34 Standing Seam Metal Roof - Dark Brown
- 35 Solid Panels to Sky Bridge
- 36 Light Grey Render
- 37 Opaque Glass Windows



ColladoCollins Architects

17124 Park Road, Suite 200, Irvine, CA 92614
 949.261.1200
 www.colladocollins.com

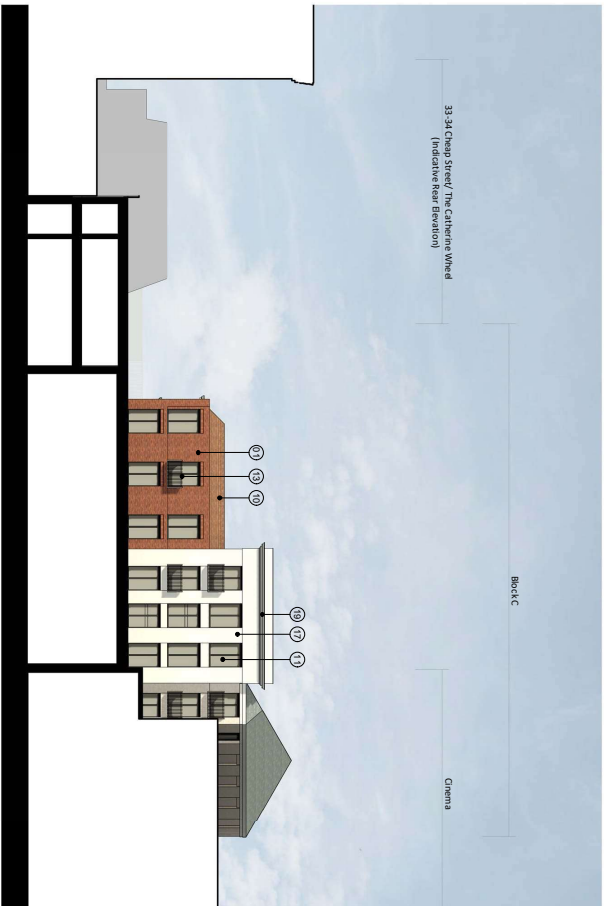
Lochalort
 Eagle Quarter, Newbury
 Proposed Elevations - Block B
 West and South
 PLANNING P3-104



1 Block C - East (Cheap Street) Elevation
1 : 200



2 Block C - North Elevation
1 : 200



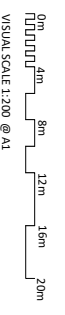
3 Block C - West (Rear) Elevation
1 : 200



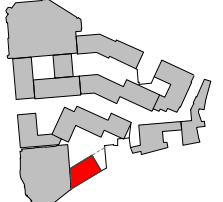
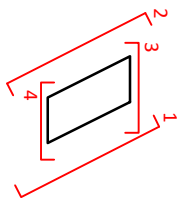
4 Block C - South Elevation (Cinema Boundary)
1 : 200

NOTES
1. All elevations are based on the current design.
2. Refer to the site plan for the location of the building.
3. All elevations are based on the current design.
4. All elevations are based on the current design.

Rev.	Notes	Date	By	App'd
1	Issue for Planning Submission	27/07/2020	AK	AK
2	Issue for Planning Submission	07/08/2020	AK	AK
3	Issue for Planning Submission	07/08/2020	AK	AK
4	Issue for Planning Submission	07/08/2020	AK	AK
5	Issue for Planning Submission	07/08/2020	AK	AK
6	Issue for Planning Submission	07/08/2020	AK	AK
7	Issue for Planning Submission	07/08/2020	AK	AK
8	Issue for Planning Submission	07/08/2020	AK	AK
9	Issue for Planning Submission	07/08/2020	AK	AK
10	Issue for Planning Submission	07/08/2020	AK	AK
11	Issue for Planning Submission	07/08/2020	AK	AK
12	Issue for Planning Submission	07/08/2020	AK	AK
13	Issue for Planning Submission	07/08/2020	AK	AK
14	Issue for Planning Submission	07/08/2020	AK	AK
15	Issue for Planning Submission	07/08/2020	AK	AK
16	Issue for Planning Submission	07/08/2020	AK	AK
17	Issue for Planning Submission	07/08/2020	AK	AK
18	Issue for Planning Submission	07/08/2020	AK	AK
19	Issue for Planning Submission	07/08/2020	AK	AK
20	Issue for Planning Submission	07/08/2020	AK	AK
21	Issue for Planning Submission	07/08/2020	AK	AK



- MATERIAL NOTES**
- 17 Brick - Beige
 - 18 Brick - Light Grey
 - 19 Brick - Light Red
 - 20 Brick - Red
 - 21 Brick - Dark Red
 - 22 Brick - Blue
 - 23 GRC or Similar - Light Grey
 - 24 GRC or Similar - Dusty Pink
 - 25 Roof Tiles
 - 26 Standing Seam Metal Roof - Dark Grey
 - 27 Window / Door Frame - Dark Grey
 - 28 Window / Door Frame - Bronze Effect
 - 29 Metal Railing / Details - Dark Grey
 - 30 Metal Railing / Details - Bronze Effect
 - 31 Expanded Mesh
 - 32 Brick Detail to Parapet
 - 33 White Render
 - 34 Window / Door Frame - White
 - 35 White GRC Detailing
 - 36 Brick - Diamond Pattern
 - 37 Clay Hanging Wall Tiles
 - 38 Window / Door Frame - Dark Green
 - 39 Standing Seam Metal Roof - Dark Brown
 - 40 Solid Panels to Sky Bridge
 - 41 Light Grey Render
 - 42 Opaque Glass Windows



ColladCollins Architects
17-21 The Arcade, Newcastle, NSW 2300
T: 02 7540 1800
F: 02 7540 1800
www.colladcollins.com.au

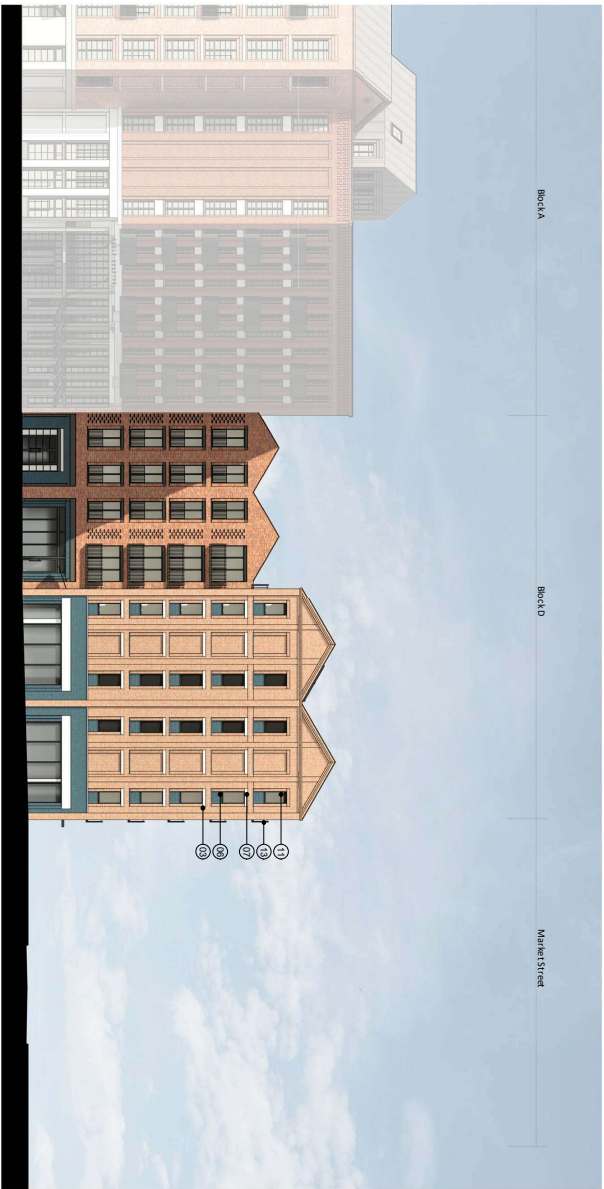
LOCHALLOST
Eagle Quarter, Newbury
Proposed Elevations - Block C
PLANNING P3-105



1 Block D - South (Market Street) Elevation
1 : 200



2 Block D - North Elevation
1 : 200

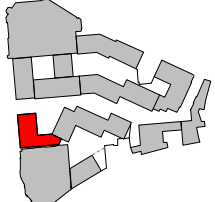
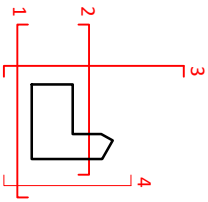


3 Block D - West (New Street) Elevation
1 : 200



4 Block D - East Elevation
1 : 200

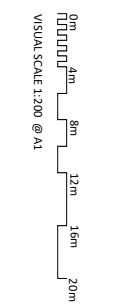
- MATERIAL NOTES**
- 101 Brick - Beige
 - 102 Brick - Light Grey
 - 103 Brick - Light Red
 - 104 Brick - Red
 - 105 Brick - Dark Red
 - 106 Brick - Blue
 - 107 GRC or Similar - Light Grey
 - 108 GRC or Similar - Dusy Pink
 - 109 Roof Tiles
 - 110 Standing Seam Metal Roof - Dark Grey
 - 111 Window / Door Frame - Dark Grey
 - 112 Window / Door Frame - Bronze Effect
 - 113 Metal Railing / Details - Dark Grey
 - 114 Metal Railing / Details - Bronze Effect
 - 115 Expanded Mesh
 - 116 Brick Detail to Parapet
 - 117 White Render
 - 118 Window / Door Frame - White
 - 119 White GRC Detailing
 - 120 Brick - Diamond Pattern
 - 121 Clay Hanging Wall Tiles
 - 122 Window / Door Frame - Dark Green
 - 123 Standing Seam Metal Roof - Dark Brown
 - 124 Solid Panels to Sky Bridge
 - 125 Light Grey Render
 - 126 Opaque Glass Windows



NOTES

1. All elevations are based on the current approved site plan and are subject to change without notice. 2. All elevations are based on the current approved site plan and are subject to change without notice. 3. All elevations are based on the current approved site plan and are subject to change without notice. 4. All elevations are based on the current approved site plan and are subject to change without notice.

Rev.	Notes	Date	By	Auth.
1.0	Issue for Planning Submission	27/02/2023	AK	AK
1.1	Issue for Council Approval	07/03/2023	AK	AK
1.2	Issue for Council Approval	07/03/2023	AK	AK
1.3	Issue for Council Approval	07/03/2023	AK	AK
1.4	Issue for Council Approval	07/03/2023	AK	AK
1.5	Issue for Council Approval	07/03/2023	AK	AK
1.6	Issue for Council Approval	07/03/2023	AK	AK
1.7	Issue for Council Approval	07/03/2023	AK	AK
1.8	Issue for Council Approval	07/03/2023	AK	AK
1.9	Issue for Council Approval	07/03/2023	AK	AK
1.10	Issue for Council Approval	07/03/2023	AK	AK
1.11	Issue for Council Approval	07/03/2023	AK	AK
1.12	Issue for Council Approval	07/03/2023	AK	AK
1.13	Issue for Council Approval	07/03/2023	AK	AK
1.14	Issue for Council Approval	07/03/2023	AK	AK
1.15	Issue for Council Approval	07/03/2023	AK	AK
1.16	Issue for Council Approval	07/03/2023	AK	AK
1.17	Issue for Council Approval	07/03/2023	AK	AK
1.18	Issue for Council Approval	07/03/2023	AK	AK
1.19	Issue for Council Approval	07/03/2023	AK	AK
1.20	Issue for Council Approval	07/03/2023	AK	AK

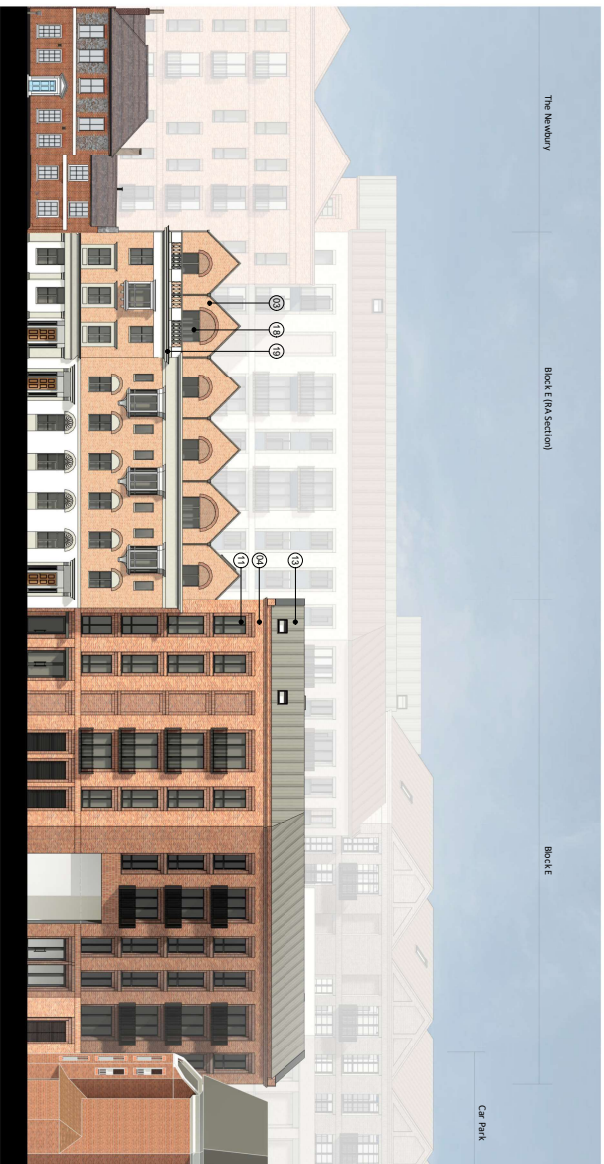


ColladoCollins Architects

17/241 Park Road
 1500001 WYNDHAM
 WYNDHAM VIC 3207
 T 03275401800
 F 03275401800
 www.colladocollins.com.au
 colladocollins.com.au

Date: 26/01/2020
 Drawn: AK
 Checked: AK
 Scale: 1:1000

LOCHALLOFT
 Eagle Quarter, Newbunby
 Proposed Elevations - Block D
 PLANNING P3-106
 P20



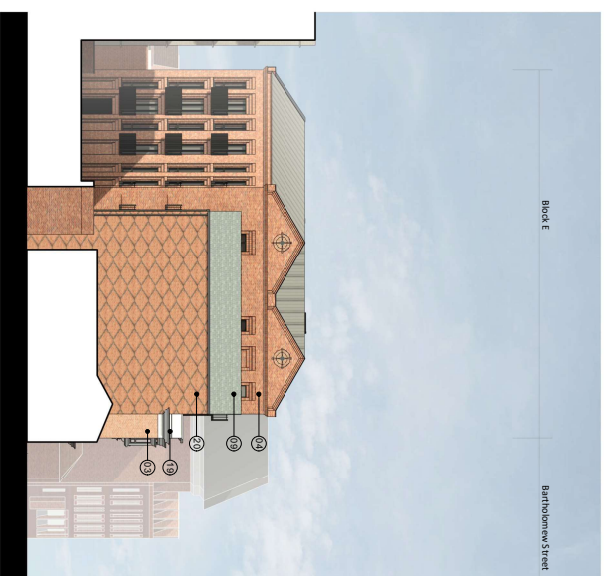
1 Block E - West (Bartholomew Street) Elevation

1 : 200



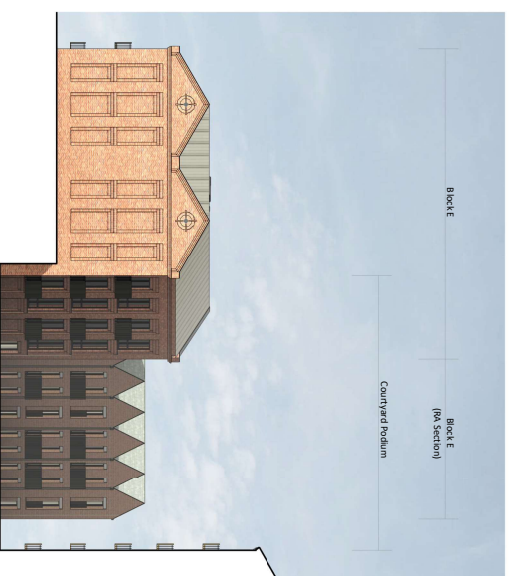
3 Block E - East (Courtyard Podium) Elevation

1 : 200



2 Block E - North Elevation

1 : 200



4 Block E - South Elevation

1 : 200

NOTES
 1. All work shall be in accordance with the current edition of the Building Regulations.
 2. Refer to the relevant contract documents for details.
 3. All work shall be in accordance with the current edition of the Building Regulations.
 4. All work shall be in accordance with the current edition of the Building Regulations.
 5. All work shall be in accordance with the current edition of the Building Regulations.

Rev.	Notes	Date	By	Auth.
1	Issue for Planning Submission	27/07/2024	AK	AK
2	Issue for Planning Submission	27/07/2024	AK	AK
3	Issue for Planning Submission	27/07/2024	AK	AK
4	Issue for Planning Submission	27/07/2024	AK	AK
5	Issue for Planning Submission	27/07/2024	AK	AK
6	Issue for Planning Submission	27/07/2024	AK	AK
7	Issue for Planning Submission	27/07/2024	AK	AK
8	Issue for Planning Submission	27/07/2024	AK	AK
9	Issue for Planning Submission	27/07/2024	AK	AK
10	Issue for Planning Submission	27/07/2024	AK	AK
11	Issue for Planning Submission	27/07/2024	AK	AK
12	Issue for Planning Submission	27/07/2024	AK	AK
13	Issue for Planning Submission	27/07/2024	AK	AK
14	Issue for Planning Submission	27/07/2024	AK	AK
15	Issue for Planning Submission	27/07/2024	AK	AK
16	Issue for Planning Submission	27/07/2024	AK	AK
17	Issue for Planning Submission	27/07/2024	AK	AK
18	Issue for Planning Submission	27/07/2024	AK	AK
19	Issue for Planning Submission	27/07/2024	AK	AK
20	Issue for Planning Submission	27/07/2024	AK	AK
21	Issue for Planning Submission	27/07/2024	AK	AK
22	Issue for Planning Submission	27/07/2024	AK	AK
23	Issue for Planning Submission	27/07/2024	AK	AK
24	Issue for Planning Submission	27/07/2024	AK	AK

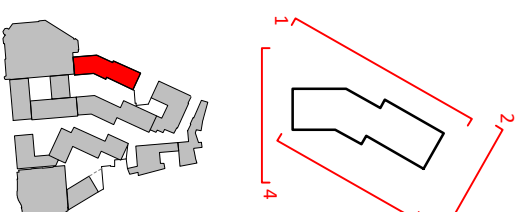
0m 4m 8m 12m 15m 20m
 VISUAL SCALE 1:200 @ A1

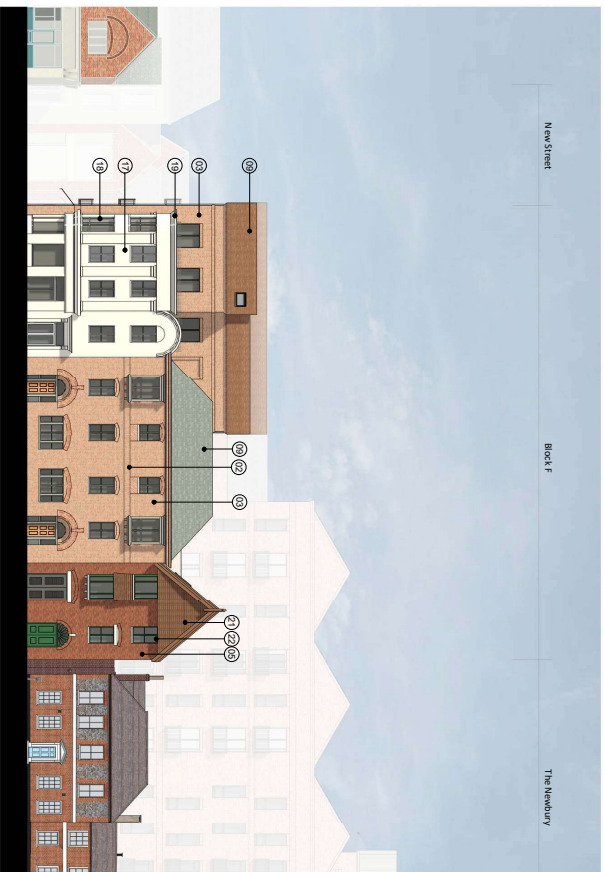
ColladoCollins Architects
 17, 21st Floor
 150000 VICTORIA ROAD
 T 020 7540 1800
 info@colladocollins.com
 www.colladocollins.com

LOCHALLOFT
 Eagle Quarter, Newbury
 Proposed Elevations - Block E
 PLANNING P3-108

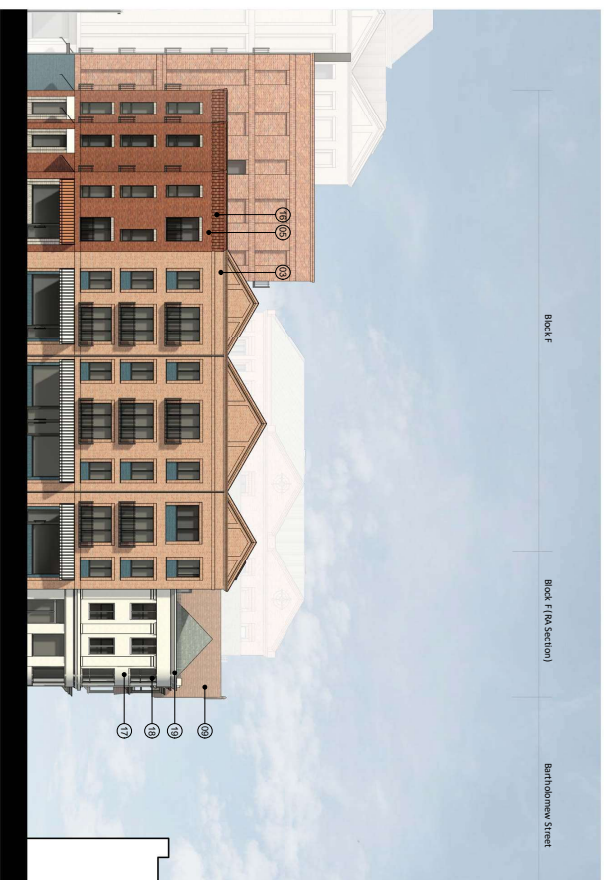
MATERIAL NOTES

- 17 Brick - Beige
- 18 Brick - Light Grey
- 19 Brick - Light Red
- 20 Brick - Red
- 21 Brick - Dark Red
- 22 Brick - Blue
- 23 GRC or Similar - Light Grey
- 24 GRC or Similar - Dusky Pink
- 25 Roof Tiles
- 26 Standing Seam Metal Roof - Dark Grey
- 27 Window / Door Frame - Dark Grey
- 28 Window / Door Frame - Bronze Effect
- 29 Metal Railing / Details - Dark Grey
- 30 Metal Railing / Details - Bronze Effect
- 31 Expanded Mesh
- 32 Brick Detail to Parapet
- 33 White Render
- 34 Window / Door Frame - White
- 35 White GRC Detailing
- 36 Brick - Diamond Pattern
- 37 Clay Hanging Wall Tiles
- 38 Window / Door Frame - Dark Green
- 39 Standing Seam Metal Roof - Dark Brown
- 40 Solid Panels to Sky Bridge
- 41 Light Grey Render
- 42 Opaque Glass Windows

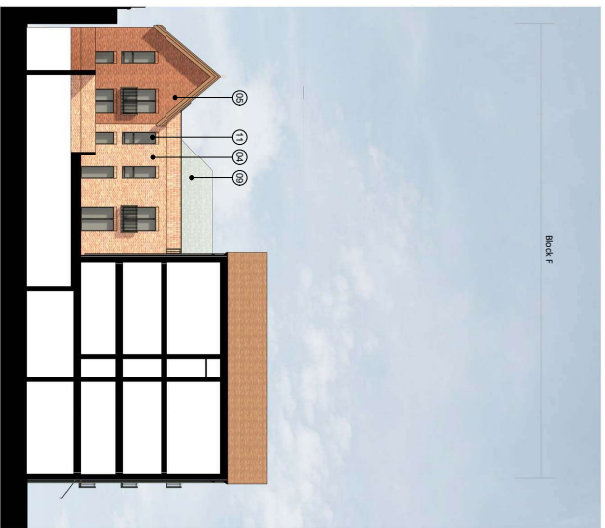




1 Block F - West (Bartholomew Street) Elevation
1 : 200



2 Block F - North (New Street) Elevation
1 : 200



3 Block F - East Elevation/Section
1 : 200

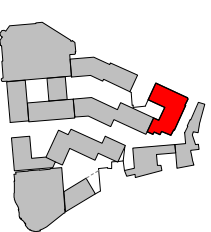
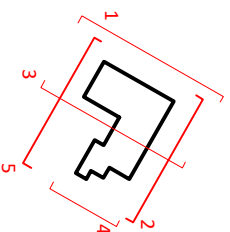


4 Block F - East Elevation
1 : 200



5 Block F - South Elevation/Section
1 : 200

- MATERIAL NOTES**
- 101 Brick - Beige
 - 102 Brick - Light Grey
 - 103 Brick - Light Red
 - 104 Brick - Red
 - 105 Brick - Dark Red
 - 106 Brick - Blue
 - 107 GRC or Similar - Light Grey
 - 108 GRC or Similar - Dusty Pink
 - 109 Roof Tiles
 - 110 Standing Seam Metal Roof - Dark Grey
 - 111 Window / Door Frame - Dark Grey
 - 112 Window / Door Frame - Bronze Effect
 - 113 Metal Railing / Details - Dark Grey
 - 114 Metal Railing / Details - Bronze Effect
 - 115 Expanded Mesh
 - 116 Brick Detail to Parapet
 - 117 White Render
 - 118 Window / Door Frame - White
 - 119 White GRC Detailing
 - 120 Brick - Diamond Pattern
 - 121 Clay Hanging Wall Tiles
 - 122 Window / Door Frame - Dark Green
 - 123 Standing Seam Metal Roof - Dark Brown
 - 124 Solid Paints to Sky Bridge
 - 125 Light Grey Render
 - 126 Opaque Glass Windows



NOTES

1. Refer to the relevant contract documents for details.
2. Refer to the relevant contract documents for details.
3. Refer to the relevant contract documents for details.
4. Refer to the relevant contract documents for details.
5. Refer to the relevant contract documents for details.

Rev.	Notes	Date	By	Check
1.0	Issue for Planning Submission	27/02/2024		
1.1	Issue for Planning Submission	27/02/2024		
1.2	Issue for Planning Submission	27/02/2024		
1.3	Issue for Planning Submission	27/02/2024		
1.4	Issue for Planning Submission	27/02/2024		
1.5	Issue for Planning Submission	27/02/2024		
1.6	Issue for Planning Submission	27/02/2024		
1.7	Issue for Planning Submission	27/02/2024		
1.8	Issue for Planning Submission	27/02/2024		
1.9	Issue for Planning Submission	27/02/2024		
1.10	Issue for Planning Submission	27/02/2024		
1.11	Issue for Planning Submission	27/02/2024		
1.12	Issue for Planning Submission	27/02/2024		
1.13	Issue for Planning Submission	27/02/2024		
1.14	Issue for Planning Submission	27/02/2024		
1.15	Issue for Planning Submission	27/02/2024		
1.16	Issue for Planning Submission	27/02/2024		
1.17	Issue for Planning Submission	27/02/2024		
1.18	Issue for Planning Submission	27/02/2024		
1.19	Issue for Planning Submission	27/02/2024		
1.20	Issue for Planning Submission	27/02/2024		
1.21	Issue for Planning Submission	27/02/2024		
1.22	Issue for Planning Submission	27/02/2024		

ColladCollins Architects

17, 24th Floor
150000 York Road
F 030 7540 1800
info@colladcollins.com
www.colladcollins.com

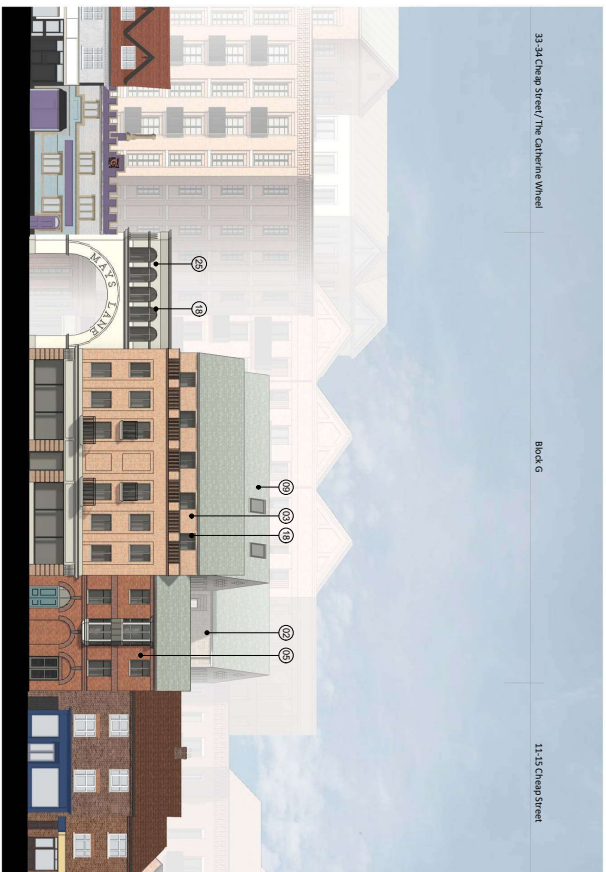
0m 4m 8m 12m 15m 20m
VISUAL SCALE 1:200 @ A1

Lochalort
Eagle Quarter, Newbury
Proposed Elevations - Block F
PLANNING P3-109

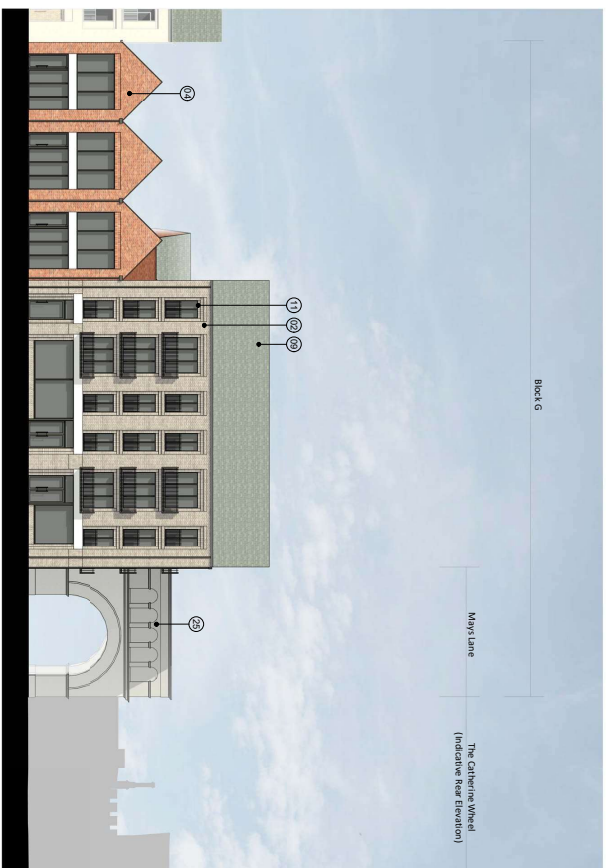
26/01/2020
ColladCollins Architects

20011

PC



1 Block G - East (Cheap Street) Elevation
1 : 200



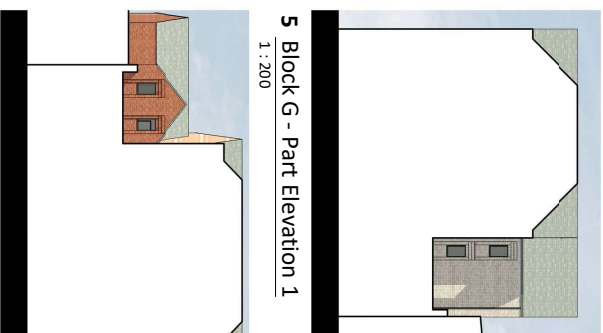
2 Block G - West (New Street) Elevation
1 : 200



3 Block G - South (Mays Lane) Elevation
1 : 200



4 Block G - North Elevation
1 : 200



6 Block G - Part Elevation 2
1 : 200

NOTES
1. All elevations are shown from the exterior.
2. All elevations are shown from the exterior.
3. All elevations are shown from the exterior.
4. All elevations are shown from the exterior.
5. All elevations are shown from the exterior.
6. All elevations are shown from the exterior.

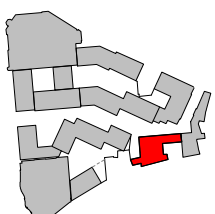
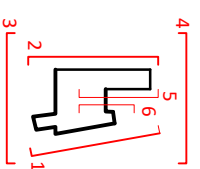
Rev.	Notes	DATE	By	Check
1.0	Issue for Permit Submittal	2/27/2023		
1.1	Revised for Owner Comments	3/1/2023		
1.2	Revised for Owner Comments	3/1/2023		
1.3	Revised for Owner Comments	3/1/2023		
1.4	Revised for Owner Comments	3/1/2023		
1.5	Revised for Owner Comments	3/1/2023		
1.6	Revised for Owner Comments	3/1/2023		
1.7	Revised for Owner Comments	3/1/2023		
1.8	Revised for Owner Comments	3/1/2023		
1.9	Revised for Owner Comments	3/1/2023		
1.10	Revised for Owner Comments	3/1/2023		
1.11	Revised for Owner Comments	3/1/2023		
1.12	Revised for Owner Comments	3/1/2023		
1.13	Revised for Owner Comments	3/1/2023		
1.14	Revised for Owner Comments	3/1/2023		
1.15	Revised for Owner Comments	3/1/2023		
1.16	Revised for Owner Comments	3/1/2023		
1.17	Revised for Owner Comments	3/1/2023		
1.18	Revised for Owner Comments	3/1/2023		
1.19	Revised for Owner Comments	3/1/2023		
1.20	Revised for Owner Comments	3/1/2023		



VISUAL SCALE 1:200 @ A1

MATERIAL NOTES

- 18 Brick - Beige
- 19 Brick - Light Grey
- 20 Brick - Light Red
- 21 Brick - Red
- 22 Brick - Dark Red
- 23 Brick - Blue
- 24 GRC or similar - Light Grey
- 25 GRC or similar - Dusty Pink
- 26 Roof Tiles
- 27 Standing Seam Metal Roof - Dark Grey
- 28 Window / Door Frame - Dark Grey
- 29 Window / Door Frame - Bronze Effect
- 30 Metal Railing / Details - Dark Grey
- 31 Metal Railing / Details - Bronze Effect
- 32 Expanded Mesh
- 33 Brick Detail to Parapet
- 34 White Render
- 35 Window / Door Frame - White
- 36 White GRC Detailing
- 37 Brick - Diamond Pattern
- 38 Clay Hanging Wall Tile
- 39 Window / Door Frame - Dark Green
- 40 Standing Seam Metal Roof - Dark Brown
- 41 Solid Paint to Sky Bridge
- 42 Light Grey Render
- 43 Opaque Glass Windows



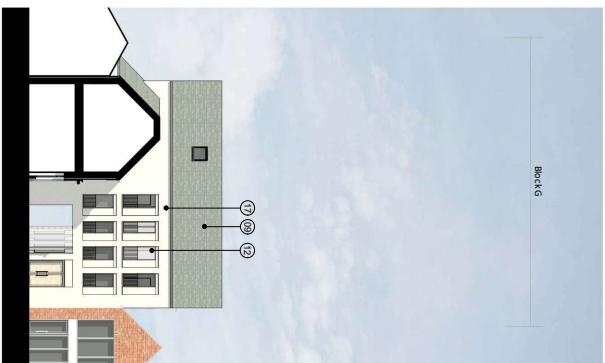
ColladCollins Architects

11241 Ash Road
15000 WYOMING
T 001730 1800
info@colladcollins.com
www.colladcollins.com

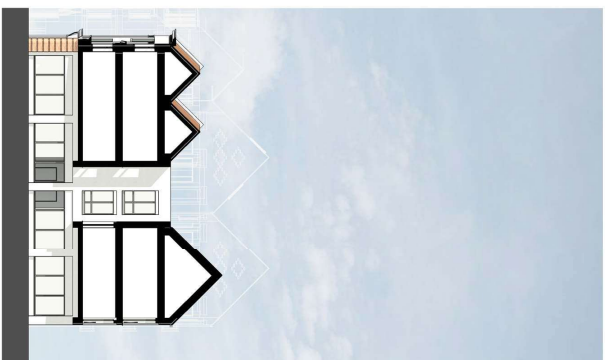
LOCHALLOFT
Eagle Quarter, Newbury
Proposed Elevations - Block G
PLANNING P3-111



1 Block H - East (Market Place) Elevation
1 : 200



2 Block H - New Street Elevation
1 : 200



3 Block H - Internal Elevation
1 : 200



4 Block H - Bartholomew Street
1 : 200

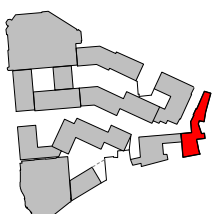
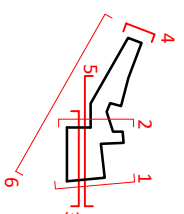


5 Block H - South (New Street) Elevation/ Internal Elevation
1 : 200



6 Block H - Southwest (New Street) Elevation
1 : 200

- MATERIAL NOTES**
- 17 Brck - Beige
 - 18 Brck - Light Grey
 - 19 Brck - Light Red
 - 20 Brck - Red
 - 21 Brck - Dark Red
 - 22 Brck - Blue
 - 23 GRC or similar - Light Grey
 - 24 GRC or similar - Dusty Pink
 - 25 Roof Tiles
 - 26 Standing Seam Metal Roof - Dark Grey
 - 27 Window / Door Frame - Dark Grey
 - 28 Window / Door Frame - Bronze Effect
 - 29 Metal Railing / Details - Dark Grey
 - 30 Metal Railing / Details - Bronze Effect
 - Expanded Mesh
 - Brck Detail to parapet
 - White Render
 - Window / Door Frame - White
 - White Render
 - White GRC Detailing
 - Brck - Diamond pattern
 - Clay Hanging Wall Tiles
 - Window / Door Frame - Dark Green
 - Standing Seam Metal Roof - Dark Brown
 - Solid Panels to Sky Bridge
 - Light Grey Render
 - Oxide Glass Windows



NOTES
1. ALL WORK TO BE COMPLETED BY 31/12/2023.
2. ALL WORK TO BE COMPLETED BY 31/12/2023.
3. ALL WORK TO BE COMPLETED BY 31/12/2023.
4. ALL WORK TO BE COMPLETED BY 31/12/2023.
5. ALL WORK TO BE COMPLETED BY 31/12/2023.
6. ALL WORK TO BE COMPLETED BY 31/12/2023.
7. ALL WORK TO BE COMPLETED BY 31/12/2023.
8. ALL WORK TO BE COMPLETED BY 31/12/2023.
9. ALL WORK TO BE COMPLETED BY 31/12/2023.
10. ALL WORK TO BE COMPLETED BY 31/12/2023.

Item	Notes	Issue	By	Date
1	Issue for Planning Submission	27/02/2023		
2	Issue for Construction Commencement	07/02/2023		
3	Issue for Construction Completion	07/02/2023		
4	Issue for Final Handover	30/09/2023		
5	Issue for Final Handover	30/09/2023		
6	Issue for Final Handover	30/09/2023		
7	Issue for Final Handover	30/09/2023		
8	Issue for Final Handover	30/09/2023		
9	Issue for Final Handover	30/09/2023		
10	Issue for Final Handover	30/09/2023		

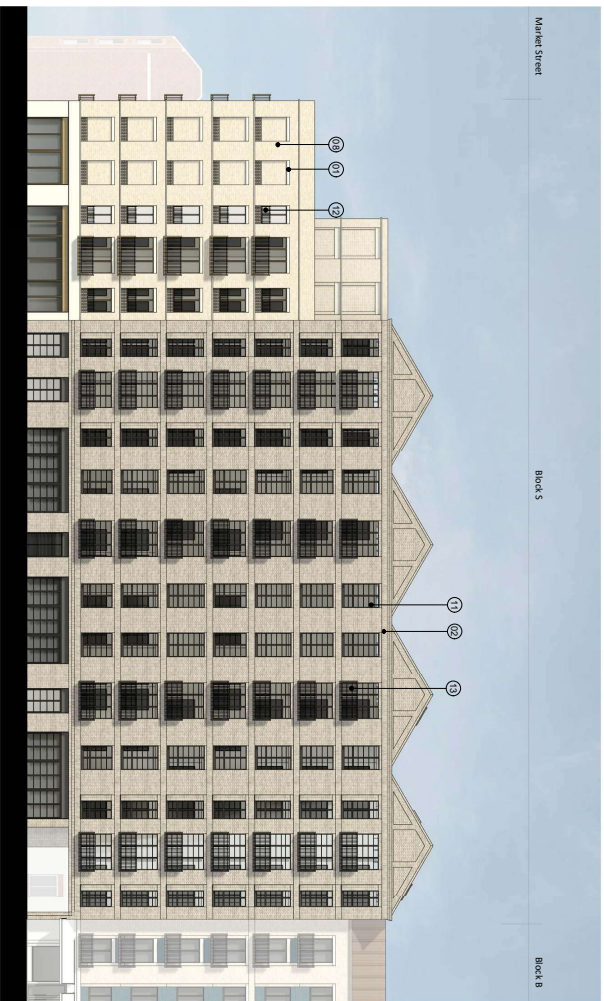


Collad Collins Architects
11-15 Cleary Street
Newbury, NY
02451-1000
Tel: 518-735-1800
Fax: 518-735-1800
www.colladcollins.com

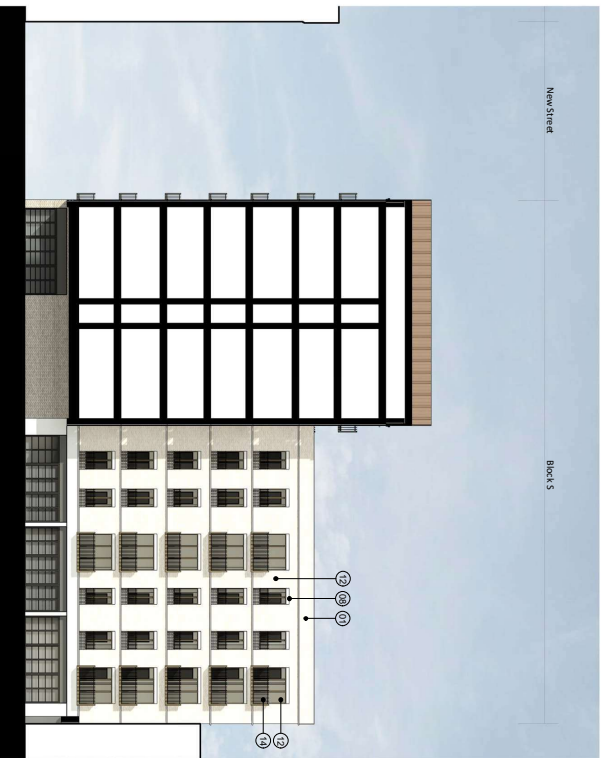
LOCHALLOST
Eagle Quarter, Newbury
Proposed Elevations - Block H
PLANNING P3-112
20011



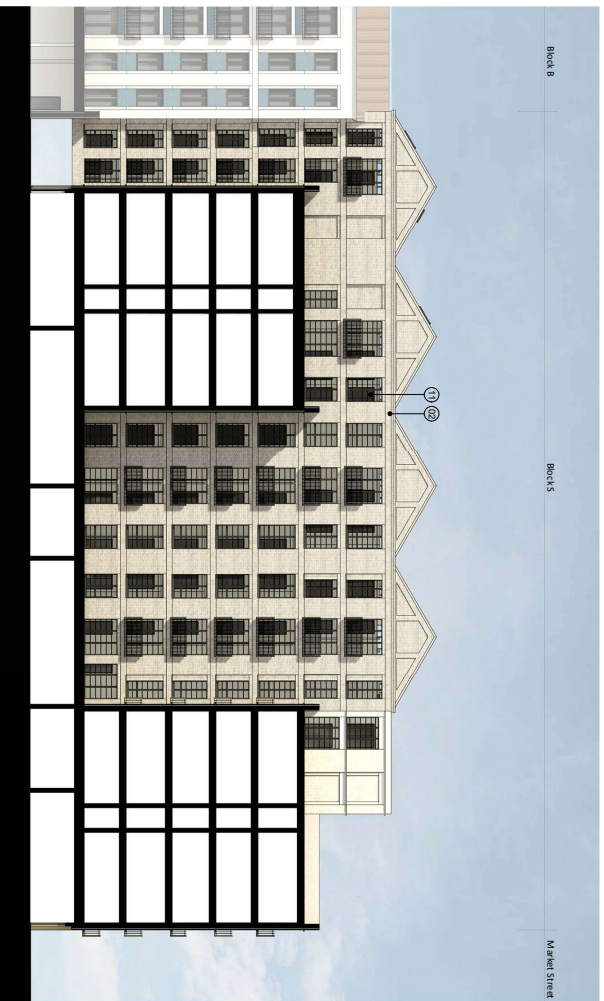
1 Block S - South (Market Street) Elevation
1 : 200



2 Block S - East (New Street) Elevation
1 : 200



3 Block S - North Elevation/ Section
1 : 200



4 Block S - West Elevation/ Section
1 : 200

NOTES
1. All elevations are based on the current design. For details refer to the relevant sections and drawings.
2. All elevations are based on the current design.
3. All elevations are based on the current design.

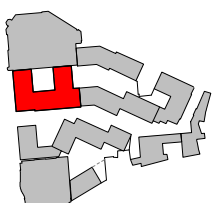
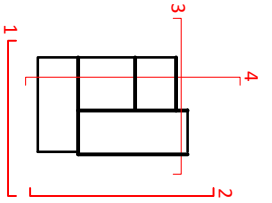
Item	Notes	Issue	Rev	Date
1	Issue for final submission	27/07/2023	1	27/07/2023
2	Issue for final submission	07/08/2023	2	07/08/2023
3	Issue for final submission	20/08/2023	3	20/08/2023
4	Issue for final submission	30/08/2023	4	30/08/2023
5	Issue for final submission	06/09/2023	5	06/09/2023
6	Issue for final submission	27/09/2023	6	27/09/2023
7	Issue for final submission	03/10/2023	7	03/10/2023
8	Issue for final submission	09/10/2023	8	09/10/2023
9	Issue for final submission	16/10/2023	9	16/10/2023
10	Issue for final submission	23/10/2023	10	23/10/2023
11	Issue for final submission	30/10/2023	11	30/10/2023
12	Issue for final submission	06/11/2023	12	06/11/2023
13	Issue for final submission	13/11/2023	13	13/11/2023
14	Issue for final submission	20/11/2023	14	20/11/2023
15	Issue for final submission	27/11/2023	15	27/11/2023
16	Issue for final submission	04/12/2023	16	04/12/2023
17	Issue for final submission	11/12/2023	17	11/12/2023
18	Issue for final submission	18/12/2023	18	18/12/2023
19	Issue for final submission	25/12/2023	19	25/12/2023
20	Issue for final submission	01/01/2024	20	01/01/2024
21	Issue for final submission	08/01/2024	21	08/01/2024
22	Issue for final submission	15/01/2024	22	15/01/2024
23	Issue for final submission	22/01/2024	23	22/01/2024
24	Issue for final submission	29/01/2024	24	29/01/2024
25	Issue for final submission	05/02/2024	25	05/02/2024
26	Issue for final submission	12/02/2024	26	12/02/2024
27	Issue for final submission	19/02/2024	27	19/02/2024
28	Issue for final submission	26/02/2024	28	26/02/2024
29	Issue for final submission	05/03/2024	29	05/03/2024
30	Issue for final submission	12/03/2024	30	12/03/2024
31	Issue for final submission	19/03/2024	31	19/03/2024
32	Issue for final submission	26/03/2024	32	26/03/2024
33	Issue for final submission	02/04/2024	33	02/04/2024
34	Issue for final submission	09/04/2024	34	09/04/2024
35	Issue for final submission	16/04/2024	35	16/04/2024
36	Issue for final submission	23/04/2024	36	23/04/2024
37	Issue for final submission	30/04/2024	37	30/04/2024
38	Issue for final submission	07/05/2024	38	07/05/2024
39	Issue for final submission	14/05/2024	39	14/05/2024
40	Issue for final submission	21/05/2024	40	21/05/2024
41	Issue for final submission	28/05/2024	41	28/05/2024
42	Issue for final submission	04/06/2024	42	04/06/2024
43	Issue for final submission	11/06/2024	43	11/06/2024
44	Issue for final submission	18/06/2024	44	18/06/2024
45	Issue for final submission	25/06/2024	45	25/06/2024
46	Issue for final submission	02/07/2024	46	02/07/2024
47	Issue for final submission	09/07/2024	47	09/07/2024
48	Issue for final submission	16/07/2024	48	16/07/2024
49	Issue for final submission	23/07/2024	49	23/07/2024
50	Issue for final submission	30/07/2024	50	30/07/2024



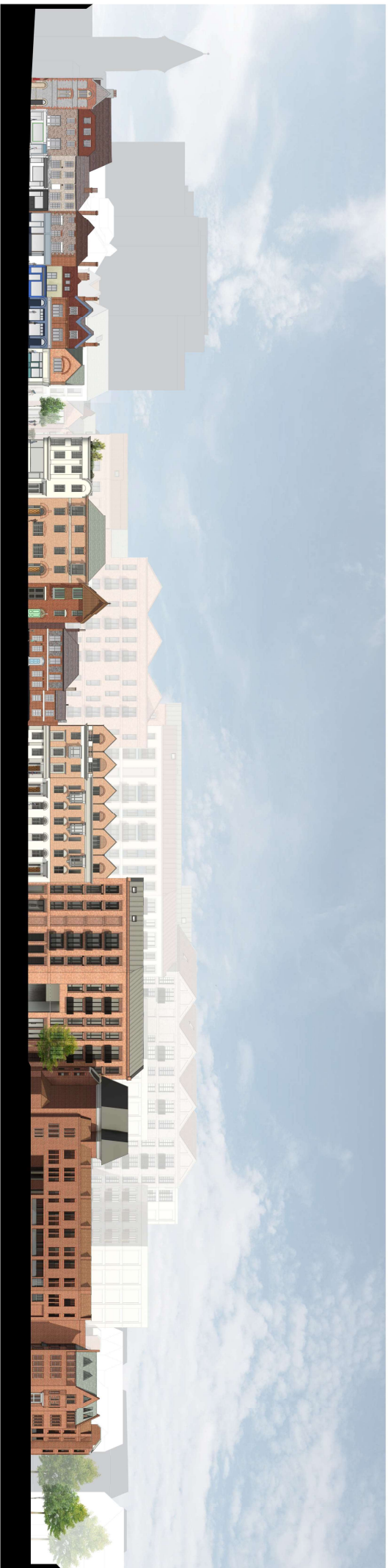
ColladoCollins Architects
17/241 Eagle Road
ColladoCollins Architects
17/241 Eagle Road
ColladoCollins Architects
17/241 Eagle Road
ColladoCollins Architects

MATERIAL NOTES

- 101 Brick - Beige
- 102 Brick - Light Grey
- 103 Brick - Light Red
- 104 Brick - Red
- 105 Brick - Dark Red
- 106 Brick - Blue
- 107 GRC or Similar - Light Grey
- 108 GRC or Similar - Dunny Pink
- 109 Roof Tiles
- 110 Standing Seam Metal Roof - Dark Grey
- 111 Window / Door Frame - Dark Grey
- 112 Window / Door Frame - Bronze Effect
- 113 Metal Railing / Details - Dark Grey
- 114 Metal Railing / Details - Bronze Effect
- 115 Expanded Mesh
- 116 Brick Detail to Parapet
- 117 White Render
- 118 Window / Door Frame - White
- 119 White GRC Detailing
- 120 Brick - Diamond Station
- 121 Clay Hanging Wall Tiles
- 122 Window / Door Frame - Dark Green
- 123 Standing Seam Metal Roof - Dark Brown
- 124 Solid Panels to Sky Bridge
- 125 Light Grey Render
- 126 Opaque Glass Windows



LOCHALLOFT
Eagle Quarter, Newbury
Proposed Elevations - Block S
PLANNING P3-113
P19



NOTES

1. All dimensions are in feet and inches unless otherwise noted.

2. All elevations are shown in perspective.

3. All elevations are shown in perspective.

4. All elevations are shown in perspective.

5. All elevations are shown in perspective.

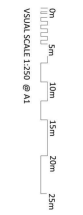
6. All elevations are shown in perspective.

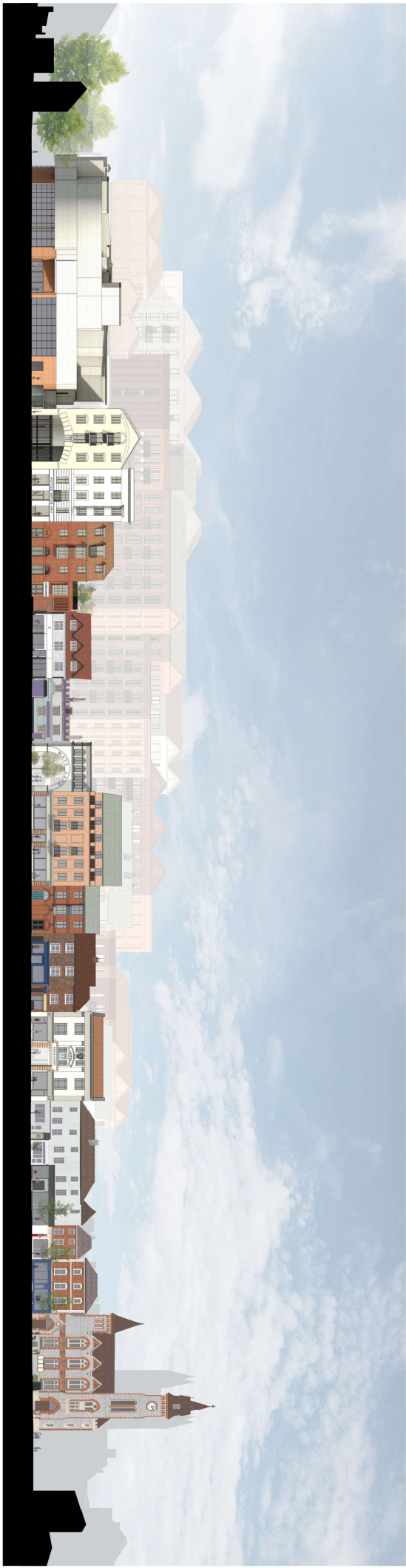
7. All elevations are shown in perspective.

8. All elevations are shown in perspective.

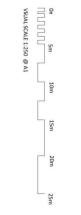
9. All elevations are shown in perspective.

10. All elevations are shown in perspective.





NO.	REVISION	DATE
1	ISSUED FOR PERMITTING	02/20/2023
2	ISSUED FOR PERMITTING	02/20/2023
3	ISSUED FOR PERMITTING	02/20/2023
4	ISSUED FOR PERMITTING	02/20/2023
5	ISSUED FOR PERMITTING	02/20/2023
6	ISSUED FOR PERMITTING	02/20/2023
7	ISSUED FOR PERMITTING	02/20/2023
8	ISSUED FOR PERMITTING	02/20/2023
9	ISSUED FOR PERMITTING	02/20/2023
10	ISSUED FOR PERMITTING	02/20/2023
11	ISSUED FOR PERMITTING	02/20/2023
12	ISSUED FOR PERMITTING	02/20/2023
13	ISSUED FOR PERMITTING	02/20/2023
14	ISSUED FOR PERMITTING	02/20/2023
15	ISSUED FOR PERMITTING	02/20/2023
16	ISSUED FOR PERMITTING	02/20/2023
17	ISSUED FOR PERMITTING	02/20/2023
18	ISSUED FOR PERMITTING	02/20/2023
19	ISSUED FOR PERMITTING	02/20/2023
20	ISSUED FOR PERMITTING	02/20/2023
21	ISSUED FOR PERMITTING	02/20/2023
22	ISSUED FOR PERMITTING	02/20/2023
23	ISSUED FOR PERMITTING	02/20/2023
24	ISSUED FOR PERMITTING	02/20/2023
25	ISSUED FOR PERMITTING	02/20/2023
26	ISSUED FOR PERMITTING	02/20/2023
27	ISSUED FOR PERMITTING	02/20/2023
28	ISSUED FOR PERMITTING	02/20/2023
29	ISSUED FOR PERMITTING	02/20/2023
30	ISSUED FOR PERMITTING	02/20/2023
31	ISSUED FOR PERMITTING	02/20/2023
32	ISSUED FOR PERMITTING	02/20/2023
33	ISSUED FOR PERMITTING	02/20/2023
34	ISSUED FOR PERMITTING	02/20/2023
35	ISSUED FOR PERMITTING	02/20/2023
36	ISSUED FOR PERMITTING	02/20/2023
37	ISSUED FOR PERMITTING	02/20/2023
38	ISSUED FOR PERMITTING	02/20/2023
39	ISSUED FOR PERMITTING	02/20/2023
40	ISSUED FOR PERMITTING	02/20/2023
41	ISSUED FOR PERMITTING	02/20/2023
42	ISSUED FOR PERMITTING	02/20/2023
43	ISSUED FOR PERMITTING	02/20/2023
44	ISSUED FOR PERMITTING	02/20/2023
45	ISSUED FOR PERMITTING	02/20/2023
46	ISSUED FOR PERMITTING	02/20/2023
47	ISSUED FOR PERMITTING	02/20/2023
48	ISSUED FOR PERMITTING	02/20/2023
49	ISSUED FOR PERMITTING	02/20/2023
50	ISSUED FOR PERMITTING	02/20/2023
51	ISSUED FOR PERMITTING	02/20/2023
52	ISSUED FOR PERMITTING	02/20/2023
53	ISSUED FOR PERMITTING	02/20/2023
54	ISSUED FOR PERMITTING	02/20/2023
55	ISSUED FOR PERMITTING	02/20/2023
56	ISSUED FOR PERMITTING	02/20/2023
57	ISSUED FOR PERMITTING	02/20/2023
58	ISSUED FOR PERMITTING	02/20/2023
59	ISSUED FOR PERMITTING	02/20/2023
60	ISSUED FOR PERMITTING	02/20/2023
61	ISSUED FOR PERMITTING	02/20/2023
62	ISSUED FOR PERMITTING	02/20/2023
63	ISSUED FOR PERMITTING	02/20/2023
64	ISSUED FOR PERMITTING	02/20/2023
65	ISSUED FOR PERMITTING	02/20/2023
66	ISSUED FOR PERMITTING	02/20/2023
67	ISSUED FOR PERMITTING	02/20/2023
68	ISSUED FOR PERMITTING	02/20/2023
69	ISSUED FOR PERMITTING	02/20/2023
70	ISSUED FOR PERMITTING	02/20/2023
71	ISSUED FOR PERMITTING	02/20/2023
72	ISSUED FOR PERMITTING	02/20/2023
73	ISSUED FOR PERMITTING	02/20/2023
74	ISSUED FOR PERMITTING	02/20/2023
75	ISSUED FOR PERMITTING	02/20/2023
76	ISSUED FOR PERMITTING	02/20/2023
77	ISSUED FOR PERMITTING	02/20/2023
78	ISSUED FOR PERMITTING	02/20/2023
79	ISSUED FOR PERMITTING	02/20/2023
80	ISSUED FOR PERMITTING	02/20/2023
81	ISSUED FOR PERMITTING	02/20/2023
82	ISSUED FOR PERMITTING	02/20/2023
83	ISSUED FOR PERMITTING	02/20/2023
84	ISSUED FOR PERMITTING	02/20/2023
85	ISSUED FOR PERMITTING	02/20/2023
86	ISSUED FOR PERMITTING	02/20/2023
87	ISSUED FOR PERMITTING	02/20/2023
88	ISSUED FOR PERMITTING	02/20/2023
89	ISSUED FOR PERMITTING	02/20/2023
90	ISSUED FOR PERMITTING	02/20/2023
91	ISSUED FOR PERMITTING	02/20/2023
92	ISSUED FOR PERMITTING	02/20/2023
93	ISSUED FOR PERMITTING	02/20/2023
94	ISSUED FOR PERMITTING	02/20/2023
95	ISSUED FOR PERMITTING	02/20/2023
96	ISSUED FOR PERMITTING	02/20/2023
97	ISSUED FOR PERMITTING	02/20/2023
98	ISSUED FOR PERMITTING	02/20/2023
99	ISSUED FOR PERMITTING	02/20/2023
100	ISSUED FOR PERMITTING	02/20/2023



ColiadeCollinsArchitects
 1111 North Main Street
 Suite 200
 Raleigh, NC 27601
 Phone: 919.833.1111
 Fax: 919.833.1112
 Website: coliaidecollins.com

LOCATION
 1111 North Main Street
 Raleigh, NC 27601
 Planning
 P3-201
 20011

